

For Research Use Only

BRWD1 Recombinant monoclonal antibody, PBS Only (Capture)

Catalog Number: 87591-2-PBS



Basic Information

Catalog Number: 87591-2-PBS	GenBank Accession Number: BC064602	Purification Method: Protein A purification
Source: Rabbit	GeneID (NCBI): 54014	CloneNo.: 252838E5
Isotype: IgG	UNIPROT ID: Q9NSI6	
Immunogen Catalog Number: AG30902	Full Name: bromodomain and WD repeat domain containing 1	
	Calculated MW: 2320 aa, 263 kDa	

Applications

Tested Applications:
Cytometric bead array, Indirect ELISA

Species Specificity:
human

Background Information

Storage

Storage:
Store at -80°C.
The product is shipped with ice packs. Upon receipt, store it immediately at -80°C

Storage Buffer:
PBS only, pH7.3

For technical support and original validation data for this product please contact:

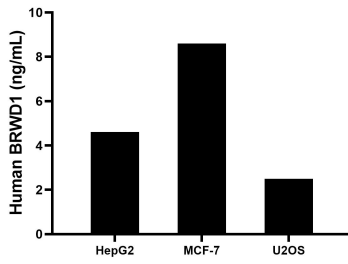
T: 4006900926

E: Proteintech-CN@ptglab.com

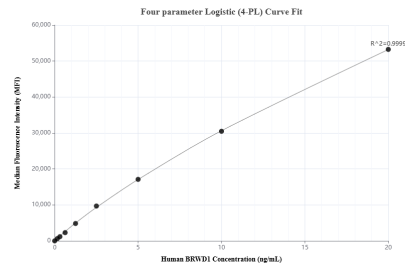
W: ptgcn.com

This product is exclusively available under Proteintech Group brand and is not available to purchase from any other manufacturer.

Selected Validation Data



The mean BRWD1 concentration was determined to be 4.6 ng/mL in HepG2 cell extract based on a 1.2 mg/mL extract load, 8.6 ng/mL in MCF-7 cell extract based on a 1.2 mg/mL extract load, 2.5 ng/mL in U2OS cell extract based on a 1.2 mg/mL extract load.



Cytometric bead array standard curve of MP03069-1, BRWD1 Recombinant Matched Antibody Pair, PBS Only. Capture antibody: 87591-2-PBS. Detection antibody: 87591-1-PBS. Standard: Ag30902. Range: 0.156-20 ng/mL.