

For Research Use Only

# EPHA2 Recombinant monoclonal antibody, PBS Only

Catalog Number: 87562-1-PBS



## Basic Information

<b>Catalog Number:</b> 87562-1-PBS	<b>GenBank Accession Number:</b> BC037166	<b>Purification Method:</b> Protein A purification
<b>Source:</b> Rabbit	<b>GeneID (NCBI):</b> 1969	<b>CloneNo.:</b> 252900E11
<b>Isotype:</b> IgG	<b>UNIPROT ID:</b> P29317	
<b>Immunogen Catalog Number:</b> EG0146	<b>Full Name:</b> EPH receptor A2	
	<b>Calculated MW:</b> 976 aa, 108 kDa	
	<b>Observed MW:</b> 130 kDa	

## Applications

**Tested Applications:**  
WB, IF/ICC, Indirect ELISA

**Species Specificity:**  
human

## Background Information

EPHA2 (Ephrin type-A receptor 2) belongs to the receptor tyrosine kinase (RTK) family, with 16 known receptors and 9 known membrane-bound ligands in all species. Based on the extracellular domain sequence homology, structure, and binding affinity, Eph receptors and their ephrin ligands can be divided into A and B subtypes (PMID: 33962882). EPHA2 contains a conserved N-terminal ligand-bound extracellular domain, a transmembrane domain, and a conserved tyrosine kinase domain (PMID: 8070404).

## Storage

**Storage:**  
Store at -80°C.  
**The product is shipped with ice packs. Upon receipt, store it immediately at -80°C**

**Storage Buffer:**  
PBS only, pH7.3

For technical support and original validation data for this product please contact:

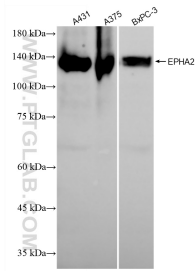
T: 4006900926

E: Proteintech-CN@ptglab.com

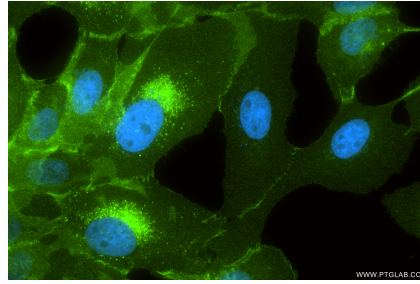
W: ptgcn.com

**This product is exclusively available under Proteintech Group brand and is not available to purchase from any other manufacturer.**

## Selected Validation Data



Various lysates were subjected to SDS PAGE followed by western blot with 87562-1-RR (EPHA2 antibody) at dilution of 1:10000 incubated at room temperature for 1.5 hours. This data was developed using the same antibody clone with 87562-1-PBS in a different storage buffer formulation.



Immunofluorescent analysis of (4% PFA) fixed A431 cells using EPHA2 antibody (87562-1-RR, Clone: 252900E11) at dilution of 1:500 and CoraLite® 488-Conjugated Goat Anti-Rabbit IgG(H+L) (SA00013-2). This data was developed using the same antibody clone with 87562-1-PBS in a different storage buffer formulation.