

For Research Use Only

# SLC25A29 Recombinant monoclonal antibody, PBS Only

Catalog Number: 87551-1-PBS



## Basic Information

<b>Catalog Number:</b> 87551-1-PBS	<b>GenBank Accession Number:</b> BC132966	<b>Purification Method:</b> Protein A purification
<b>Source:</b> Rabbit	<b>GeneID (NCBI):</b> 123096	<b>CloneNo.:</b> 252932H6
<b>Isotype:</b> IgG	<b>UNIPROT ID:</b> Q8N8R3	
<b>Immunogen Catalog Number:</b> AG24662	<b>Full Name:</b> solute carrier family 25, member 29	
	<b>Calculated MW:</b> 303 aa, 32 kDa	
	<b>Observed MW:</b> 32 kDa	

## Applications

**Tested Applications:**  
WB, Indirect ELISA

**Species Specificity:**  
human, mouse, rat

## Background Information

SLC25A29 is a mitochondrial transporter belonging to the SLC25 superfamily, which facilitates the exchange of metabolites across the inner mitochondrial membrane. Initially reported as a carnitine/acylcarnitine-like carrier, it is now recognized as a key amino acid transporter, particularly for arginine and lysine, contributing to mitochondrial protein synthesis and amino acid degradation. SLC25A29 is primarily expressed in the heart, brain, liver, and kidneys and is associated with metabolic disorders and vascular diseases. Its expression is regulated by histone lactose modification and is associated with conditions such as lung adenocarcinoma and diabetic retinopathy. (PMID: 24652292; 3775731; 29459713; 40244673)

## Storage

**Storage:**  
Store at -80°C.  
**The product is shipped with ice packs. Upon receipt, store it immediately at -80°C**  
**Storage Buffer:**  
PBS only, pH7.3

For technical support and original validation data for this product please contact:

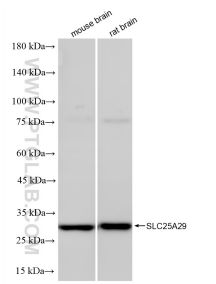
T: 4006900926

E: [Proteintech-CN@ptglab.com](mailto:Proteintech-CN@ptglab.com)

W: [ptgcn.com](http://ptgcn.com)

**This product is exclusively available under Proteintech Group brand and is not available to purchase from any other manufacturer.**

## Selected Validation Data



Various lysates were subjected to SDS PAGE followed by western blot with 87551-1-RR (SLC25A29 antibody) at dilution of 1:5000 incubated at room temperature for 1.5 hours. This data was developed using the same antibody clone with 87551-1-PBS in a different storage buffer formulation.