

For Research Use Only

# SDC3 Recombinant monoclonal antibody, PBS Only (Capture)

Catalog Number: 87547-2-PBS



## Basic Information

<b>Catalog Number:</b> 87547-2-PBS	<b>GenBank Accession Number:</b> BC013974	<b>Purification Method:</b> Protein A purification
<b>Source:</b> Rabbit	<b>GeneID (NCBI):</b> 9672	<b>CloneNo.:</b> 252828E4
<b>Isotype:</b> IgG	<b>UNIPROT ID:</b> O75056	
<b>Immunogen Catalog Number:</b> AG1317	<b>Full Name:</b> syndecan 3	
	<b>Calculated MW:</b> 38 kDa	

## Applications

**Tested Applications:**  
Cytometric bead array, Indirect ELISA

**Species Specificity:**  
human

## Background Information

### Storage

**Storage:**  
Store at -80°C.  
**The product is shipped with ice packs. Upon receipt, store it immediately at -80°C**

**Storage Buffer:**  
PBS only, pH7.3

For technical support and original validation data for this product please contact:

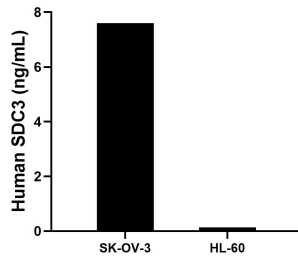
T: 4006900926

E: [Proteintech-CN@ptglab.com](mailto:Proteintech-CN@ptglab.com)

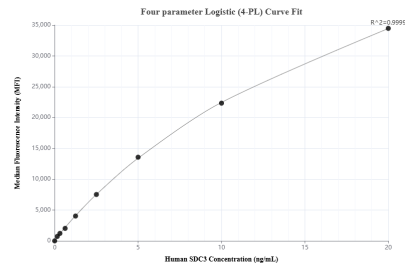
W: [ptgcn.com](http://ptgcn.com)

**This product is exclusively available under Proteintech Group brand and is not available to purchase from any other manufacturer.**

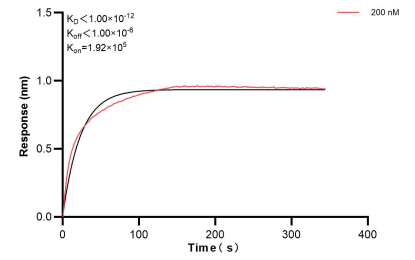
## Selected Validation Data



The mean SDC3 concentration was determined to be 7.6 ng/mL in SK-OV-3 cell extract based on a 1.1 mg/mL extract load, 0.13 ng/mL in HL-60 cell extract based on a 1.2 mg/mL extract load.



Cytometric bead array standard curve of MP03035-1, SDC3 Recombinant Matched Antibody Pair, PBS Only. Capture antibody: 87547-2-PBS. Detection antibody: 87547-1-PBS. Standard: Ag1317. Range: 0.156-20 ng/mL.



Bi-layer interferometry (BLI) kinetic assay of 87547-2-PBS against Human SDC3 was performed. The affinity constant is below 1 pM.