

For Research Use Only

# SDC3 Recombinant monoclonal antibody, PBS Only (Detector)

Catalog Number: 87547-1-PBS



## Basic Information

Catalog Number: 87547-1-PBS	GenBank Accession Number: BC013974	Purification Method: Protein A purification
Source: Rabbit	GeneID (NCBI): 9672	CloneNo.: 252828A3
Isotype: IgG	UNIPROT ID: O75056	
Immunogen Catalog Number: AG1317	Full Name: syndecan 3	
	Calculated MW: 38 kDa	

## Applications

**Tested Applications:**  
Cytometric bead array, Indirect ELISA

**Species Specificity:**  
human

## Background Information

### Storage

**Storage:**  
Store at -80°C.  
**The product is shipped with ice packs. Upon receipt, store it immediately at -80°C**

**Storage Buffer:**  
PBS only, pH7.3

For technical support and original validation data for this product please contact:

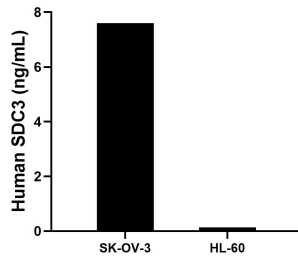
T: 4006900926

E: [Proteintech-CN@ptglab.com](mailto:Proteintech-CN@ptglab.com)

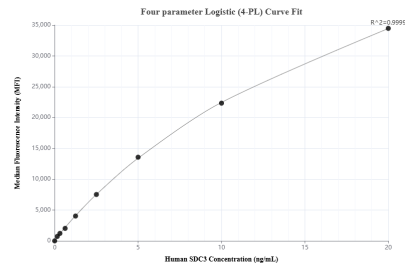
W: [ptgcn.com](http://ptgcn.com)

**This product is exclusively available under Proteintech Group brand and is not available to purchase from any other manufacturer.**

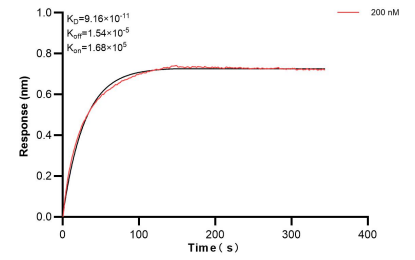
## Selected Validation Data



The mean SDC3 concentration was determined to be 7.6 ng/mL in SK-OV-3 cell extract based on a 1.1 mg/mL extract load, 0.13 ng/mL in HL-60 cell extract based on a 1.2 mg/mL extract load.



Cytometric bead array standard curve of MP03035-1, SDC3 Recombinant Matched Antibody Pair, PBS Only. Capture antibody: 87547-2-PBS. Detection antibody: 87547-1-PBS. Standard: Ag1317. Range: 0.156-20 ng/mL.



Bi-layer interferometry (BLI) kinetic assay of 87547-1-PBS against Human SDC3 was performed. The affinity constant is 91.6 pM.