

For Research Use Only

# Beclin 1 Recombinant monoclonal antibody, PBS Only (Detector)

Catalog Number: 87536-3-PBS



## Basic Information

Catalog Number:

87536-3-PBS

Source:

Rabbit

Isotype:

IgG

Immunogen Catalog Number:

AG1843

GenBank Accession Number:

BC010276

GeneID (NCBI):

8678

UNIPROT ID:

Q14457

Full Name:

beclin 1, autophagy related

Calculated MW:

52 kDa

Purification Method:

Protein A purification

CloneNo.:

252793A6

## Applications

Tested Applications:

Sandwich ELISA, Indirect ELISA

Species Specificity:

human

## Background Information

### Storage

Storage:

Store at -80°C.

The product is shipped with ice packs. Upon receipt, store it immediately at -80°C

Storage Buffer:

PBS only, pH7.3

For technical support and original validation data for this product please contact:

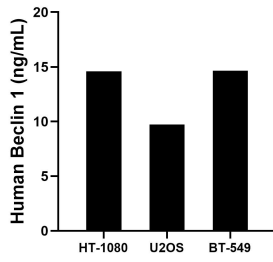
T: 4006900926

E: [Proteintech-CN@ptglab.com](mailto:Proteintech-CN@ptglab.com)

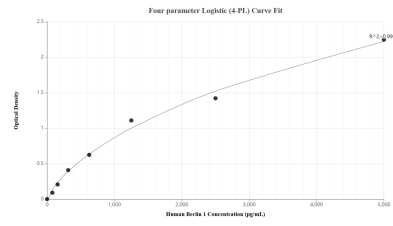
W: [ptgcn.com](http://ptgcn.com)

This product is exclusively available under Proteintech Group brand and is not available to purchase from any other manufacturer.

## Selected Validation Data



The mean Beclin 1 concentration was determined to be 14.6 ng/mL in HT-1080 cell extract based on a 1.2 mg/mL extract load, 9.7 ng/mL in U2OS cell extract based on a 1.2 mg/mL extract load and 14.6 ng/mL in BT-549 cell extract based on a 1.5 mg/mL extract load.



Sandwich ELISA standard curve of MP03283-1, Human Beclin 1 Recombinant Matched Antibody Pair - PBS only. 87536-4-PBS was coated to a plate as the capture antibody and incubated with serial dilutions of standard Ag1843. 87536-3-PBS was HRP conjugated as the detection antibody. Range: 78.1-5000 pg/mL.