

For Research Use Only

# Human IgA2 Recombinant monoclonal antibody, PBS Only (Detector)

Catalog Number:87533-2-PBS



## Basic Information

Catalog Number:

87533-2-PBS

Source:

Rabbit

Isotype:

IgG

Immunogen Catalog Number:

EG9191

GenBank Accession Number:

GeneID (NCBI):

3494

Full Name:

immunoglobulin heavy constant

alpha 2 (A2m marker)

Purification Method:

Protein A purification

CloneNo.:

252588H8

## Applications

Tested Applications:

Cytometric bead array, Indirect ELISA

Species Specificity:

human

## Background Information

### Storage

Storage:

Store at -80°C.

**The product is shipped with ice packs. Upon receipt, store it immediately at -80°C**

Storage Buffer:

PBS only, pH7.3

For technical support and original validation data for this product please contact:

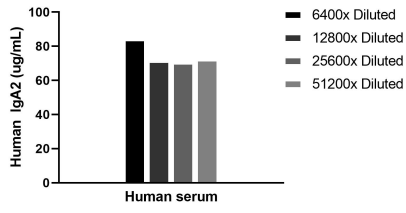
T: 4006900926

E: [Proteintech-CN@ptglab.com](mailto:Proteintech-CN@ptglab.com)

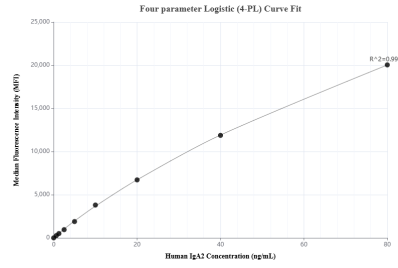
W: [ptgcn.com](http://ptgcn.com)

**This product is exclusively available under Proteintech Group brand and is not available to purchase from any other manufacturer.**

## Selected Validation Data



The mean IgA2 concentration was determined to be 74.36 ug/mL in human serum.



Cytometric bead array standard curve of MP03081-1, IgA2 Recombinant Matched Antibody Pair, PBS Only. Capture antibody: 87533-3-PBS. Detection antibody: 87533-2-PBS. Standard: Eg9191. Range: 0.625-80 ng/mL.