

For Research Use Only

Mouse CD3D Recombinant monoclonal antibody, PBS Only (Detector)

Catalog Number:87532-7-PBS



Basic Information

Catalog Number:

87532-7-PBS

Source:

Rabbit

Isotype:

IgG

Immunogen Catalog Number:

EG4665

GenBank Accession Number:

NM_013487.3

GeneID (NCBI):

12500

UNIPROT ID:

P04235

Full Name:

CD3 antigen, delta polypeptide

Calculated MW:

19 kDa

Purification Method:

Protein A purification

CloneNo.:

252849A1

Applications

Tested Applications:

Cytometric bead array, Sandwich ELISA, Indirect ELISA

Species Specificity:

mouse

Background Information

Storage

Storage:

Store at -80°C.

The product is shipped with ice packs. Upon receipt, store it immediately at -80°C

Storage Buffer:

PBS only, pH7.3

For technical support and original validation data for this product please contact:

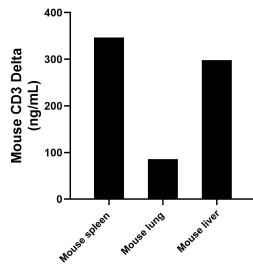
T: 4006900926

E: Proteintech-CN@ptglab.com

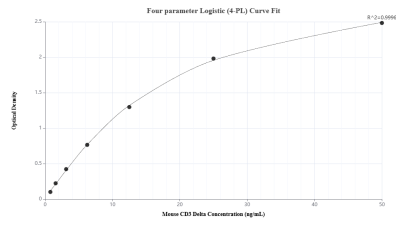
W: ptgcn.com

This product is exclusively available under Proteintech Group brand and is not available to purchase from any other manufacturer.

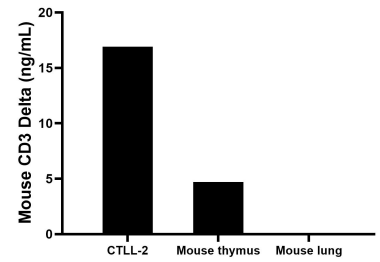
Selected Validation Data



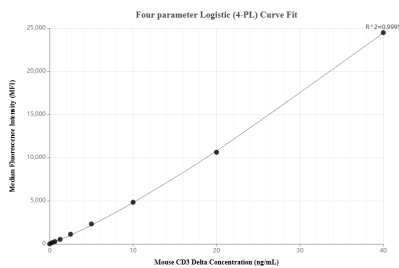
The mean CD3 Delta concentration was determined to be 346.84 ng/mL in mouse spleen tissue extract based on a 5.8 mg/mL extract load, 85.94 ng/mL in mouse lung tissue extract based on a 5.0 mg/mL extract load and 298.06 ng/mL in mouse liver tissue extract based on a 8.4 mg/mL extract load.



Sandwich ELISA standard curve of MP03077-2, Mouse CD3 Delta Recombinant Matched Antibody Pair - PBS only. 87532-1-PBS was coated to a plate as the capture antibody and incubated with serial dilutions of standard Eg4665. 87532-7-PBS was HRP conjugated as the detection antibody. Range: 0.78-50 ng/mL



The mean CD3 Delta concentration was determined to be 16.9 ng/mL in CTLL-2 cell extract based on a 1.2 mg/mL extract load, 4.7 ng/mL in mouse thymus tissue extract based on a 1.2 mg/mL extract load, mouse lung tissue extract were served as a negative control.



Cytometric bead array standard curve of MP03077-1, MOUSE CD3 Delta Recombinant Matched Antibody Pair, PBS Only. Capture antibody: 87532-8-PBS. Detection antibody: 87532-7-PBS. Standard: Eg4665. Range: 0.312-40 ng/mL