

For Research Use Only

Phospho-PFKFB2 (Ser483) Recombinant monoclonal antibody, PBS Only

Catalog Number: 87525-1-PBS



Basic Information

Catalog Number:

87525-1-PBS

Source:

Rabbit

Isotype:

IgG

GenBank Accession Number:

NM_006212

GeneID (NCBI):

5208

UNIPROT ID:

O60825

Full Name:

6-phosphofructo-2-kinase/fructose-2,6-bisphosphatase 2

Calculated MW:

58 kDa

Observed MW:

55 kDa

Purification Method:

Protein A purification

CloneNo.:

252874F10

Applications

Tested Applications:

WB, Indirect ELISA

Species Specificity:

human

Background Information

Phospho-PFKFB2 (Ser483) is the active-site-switching modification of the heart-type bifunctional enzyme 6-phosphofructo-2-kinase/fructose-2,6-bisphosphatase (PFKFB2). Phosphorylation at serine 483, located in the C-terminal regulatory segment, is catalyzed mainly by Akt downstream of PI3K and is essential for maximal 2-kinase activity: it increases the synthesis of fructose-2,6-bisphosphate (F2,6BP), the most potent allosteric activator of 6-phosphofructo-1-kinase (PFK-1), thereby accelerating glycolytic flux and ATP production. (PMID: 34282152)

Storage

Storage:

Store at -80°C.

The product is shipped with ice packs. Upon receipt, store it immediately at -80°C

Storage Buffer:

PBS only, pH7.3

For technical support and original validation data for this product please contact:

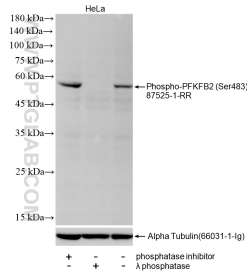
T: 4006900926

E: Proteintech-CN@ptglab.com

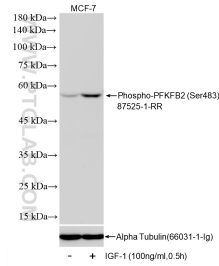
W: ptgcn.com

This product is exclusively available under Proteintech Group brand and is not available to purchase from any other manufacturer.

Selected Validation Data



Non-treated HeLa cells, phosphatase inhibitor treated HeLa cells and λ phosphatase treated HeLa cells were subjected to SDS PAGE followed by western blot with 87525-1-RR (Phospho-PFKFB2 (Ser483) antibody) at dilution of 1:2000 incubated at room temperature for 1.5 hours. The membrane was stripped and re-blotted with Alpha Tubulin (66031-1-Ig) antibody as a loading control. This data was developed using the same antibody clone with 87525-1-PBS in a



Non-treated MCF-7 cells and IGF-1 treated MCF-7 cells were subjected to SDS PAGE followed by western blot with 87525-1-RR (Phospho-PFKFB2 (Ser483) antibody) at dilution of 1:2000 incubated at room temperature for 1.5 hours. The membrane was stripped and re-blotted with Alpha Tubulin (66031-1-Ig) antibody as a loading control. This data was developed using the same antibody clone with 87525-1-PBS in a different storage buffer formulation.