

For Research Use Only

RIC8B Recombinant monoclonal antibody, PBS Only (Detector)

Catalog Number: 87524-1-PBS



Basic Information

Catalog Number: 87524-1-PBS	GenBank Accession Number: BC034220	Purification Method: Protein A purification
Source: Rabbit	GeneID (NCBI): 55188	CloneNo.: 252908A7
Isotype: IgG	UNIPROT ID: Q9NVN3	
Immunogen Catalog Number: AG11888	Full Name: resistance to inhibitors of cholinesterase 8 homolog B (C. elegans)	
	Calculated MW: 495 aa, 61 kDa	
	Observed MW: 70 kDa	

Applications

Tested Applications:
WB, Cytometric bead array, Indirect ELISA

Species Specificity:
human, mouse, rat, pig

Background Information

Ric8, also known as synembryn, is a guanine nucleotide exchange factor (GEF) that enhances variegated G protein signaling pathways, including $G\alpha(q)$ and $G\alpha(s)$ regulation of neurotransmission, $G\alpha(i)$ -dependent mitotic spindle positioning during (asymmetric) cell division, and $G\alpha(olf)$ -dependent odorant receptor signaling (PMID: 21467038). In mammals, two Ric8 homologues have been reported (Ric8A and Ric8B). Ric8B is able to potentiate $G(s)/G(olf)$ signaling (PMID: 15829631; 16754875; 20133939).

Storage

Storage:
Store at -80°C .
The product is shipped with ice packs. Upon receipt, store it immediately at -80°C

Storage Buffer:
PBS only, pH7.3

For technical support and original validation data for this product please contact:

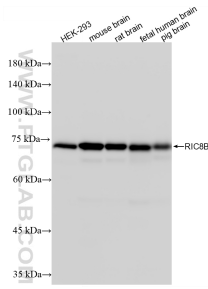
T: 4006900926

E: Proteintech-CN@ptglab.com

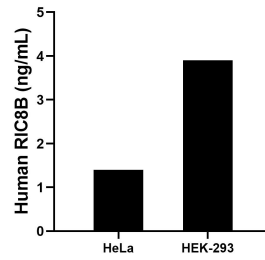
W: ptgcn.com

This product is exclusively available under Proteintech Group brand and is not available to purchase from any other manufacturer.

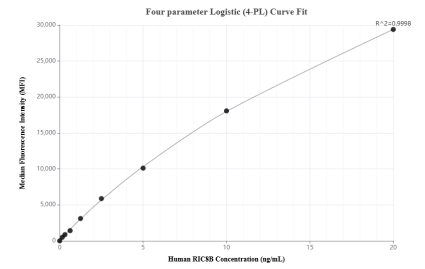
Selected Validation Data



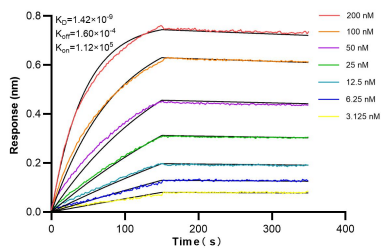
Various lysates were subjected to SDS PAGE followed by western blot with 87524-1-RR (RIC8B antibody) at dilution of 1:5000 incubated at room temperature for 1.5 hours. This data was developed using the same antibody clone with 87524-1-PBS in a different storage buffer formulation.



The mean RIC8B concentration was determined to be 1.4 ng/mL in HeLa cell extract based on a 1.2 mg/mL extract load, 3.9 ng/mL in HEK-293 cell extract based on a 1.2 mg/mL extract load.



Cytometric bead array standard curve of MP03094-1, RIC8B Recombinant Matched Antibody Pair, PBS Only. Capture antibody: 87524-2-PBS. Detection antibody: 87524-1-PBS. Standard: Ag11888. Range: 0.156-20 ng/mL.



Biolayer interferometry (BLI) kinetic assays of 87524-1-RR against Human RIC8B were performed. The affinity constant is 1.42 nM.