

For Research Use Only

XPP2 Recombinant monoclonal antibody, PBS Only (Detector)

Catalog Number: 87521-2-PBS



Basic Information

Catalog Number: 87521-2-PBS	GenBank Accession Number: NM_003399.5	Purification Method: Protein A purification
Source: Rabbit	GeneID (NCBI): 7512	CloneNo.: 252566F3
Isotype: IgG	UNIPROT ID: O43895	
Immunogen Catalog Number: EG6084	Full Name: X-prolyl aminopeptidase (aminopeptidase P) 2, membrane-bound	
	Calculated MW: 76 kDa	

Applications

Tested Applications:
Cytometric bead array, Sandwich ELISA, Indirect ELISA

Species Specificity:
human

Background Information

Storage

Storage:
Store at -80°C.
The product is shipped with ice packs. Upon receipt, store it immediately at -80°C

Storage Buffer:
PBS only, pH7.3

For technical support and original validation data for this product please contact:

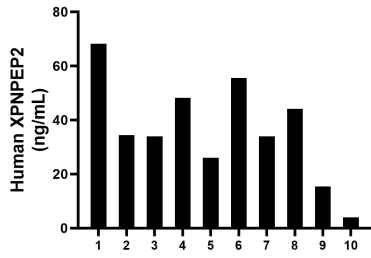
T: 4006900926

E: Proteintech-CN@ptglab.com

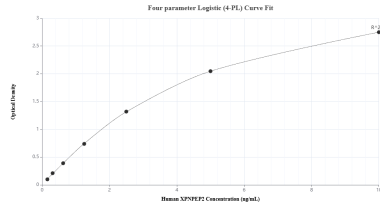
W: ptgcn.com

This product is exclusively available under Proteintech Group brand and is not available to purchase from any other manufacturer.

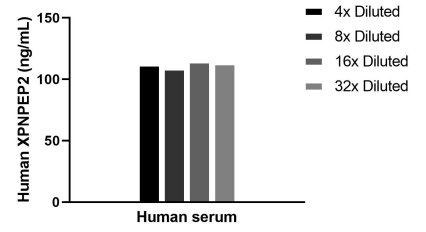
Selected Validation Data



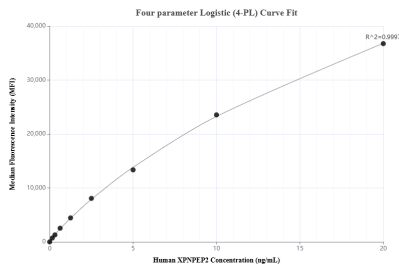
Plasma of ten individual healthy human donors was measured. The human XPNPEP2 concentration of detected samples was determined to be 36.37 ng/mL with a range of 3.99 - 68.15 ng/mL.



Sandwich ELISA standard curve of MP03058-2, Human XPNPEP2 Recombinant Matched Antibody Pair - PBS only. 87521-4-PBS was coated to a plate as the capture antibody and incubated with serial dilutions of standard Eg6084. 87521-2-PBS was HRP conjugated as the detection antibody. Range: 0.156-10 ng/mL



The mean XPNPEP2 concentration was determined to be 111.9 ng/mL in human serum.



Cytometric bead array standard curve of MP03058-1, XPNPEP2 Recombinant Matched Antibody Pair, PBS Only. Capture antibody: 87521-3-PBS. Detection antibody: 87521-2-PBS. Standard: Eg6084. Range: 0.156-20 ng/mL