

For Research Use Only

# CKMT2 Recombinant monoclonal antibody

Catalog Number: 87517-1-RR



## Basic Information

<b>Catalog Number:</b> 87517-1-RR	<b>GenBank Accession Number:</b> BC029140	<b>Purification Method:</b> Protein A purification
<b>Source:</b> Rabbit	<b>GeneID (NCBI):</b> 1160	<b>CloneNo.:</b> 252920F5
<b>Isotype:</b> IgG	<b>UNIPROT ID:</b> P17540	<b>Recommended Dilutions:</b> WB: 1:5000-1:50000
<b>Immunogen Catalog Number:</b> AG3971	<b>Full Name:</b> creatine kinase, mitochondrial 2 (sarcomeric)	
	<b>Calculated MW:</b> 419 aa, 48 kDa	
	<b>Observed MW:</b> 41-48 kDa	

## Applications

<b>Tested Applications:</b> WB, ELISA	<b>Positive Controls:</b> WB: rat heart tissue, HEK-293T cells, mouse heart tissue, mouse skeletal muscle tissue, rat skeletal muscle tissue, human heart tissue
<b>Species Specificity:</b> human, mouse, rat	

## Background Information

CKMT2 (Creatine kinase S-type, mitochondrial), also known as s-MtCK, is one of the creatine kinase (CK) isozymes that are tightly coupled to adenosine triphosphate (ATP) output via adenine nucleotide transport proteins or carriers, making it an important player in ATP synthesis and respiratory chain activity (PMID: 38172162). Enhancing Ckmt2 expression or activity can protect against myocardial injury caused by ischemia-reperfusion injury (PMID: 39457679).

## Storage

**Storage:**  
Store at -20°C. Stable for one year after shipment.  
**Storage Buffer:**  
PBS with 0.02% sodium azide and 50% glycerol, pH7.3  
Aliquoting is unnecessary for -20°C storage

For technical support and original validation data for this product please contact:

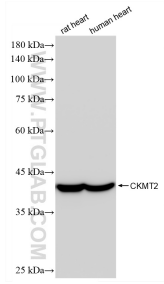
T: 4006900926

E: [Proteintech-CN@ptglab.com](mailto:Proteintech-CN@ptglab.com)

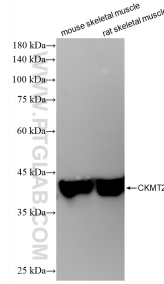
W: [ptgcn.com](http://ptgcn.com)

This product is exclusively available under Proteintech Group brand and is not available to purchase from any other manufacturer.

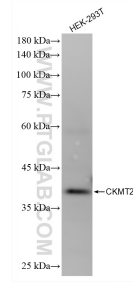
## Selected Validation Data



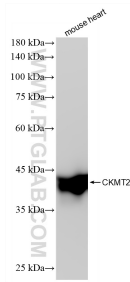
Various lysates were subjected to SDS PAGE followed by western blot with 87517-1-RR (CKMT2 antibody) at dilution of 1:10000 incubated at room temperature for 1.5 hours.



Various lysates were subjected to SDS PAGE followed by western blot with 87517-1-RR (CKMT2 antibody) at dilution of 1:10000 incubated at room temperature for 1.5 hours.



HEK-293T cells were subjected to SDS PAGE followed by western blot with 87517-1-RR (CKMT2 antibody) at dilution of 1:10000 incubated at room temperature for 1.5 hours.



mouse heart tissue were subjected to SDS PAGE followed by western blot with 87517-1-RR (CKMT2 antibody) at dilution of 1:10000 incubated at room temperature for 1.5 hours.