

For Research Use Only

TUBG2 Recombinant monoclonal antibody

Catalog Number: 87516-1-RR



Basic Information

Catalog Number:

87516-1-RR

Source:

Rabbit

Isotype:

IgG

Immunogen Catalog Number:

AG27728

GenBank Accession Number:

BC051890

GeneID (NCBI):

27175

UNIPROT ID:

Q9NRH3

Full Name:

tubulin, gamma 2

Calculated MW:

451 aa, 51 kDa

Observed MW:

51 kDa

Purification Method:

Protein A purification

CloneNo.:

252833C10

Recommended Dilutions:

WB: 1:2000-1:10000

IF/ICC: 1:250-1:1000

Applications

Tested Applications:

WB, IF/ICC, ELISA

Species Specificity:

human, mouse, rat, canine

Positive Controls:

WB : HeLa cells, T-47D cells, SK-BR-3 cells, MDCK cells, COS-7 cells, mouse cerebellum tissue, rat cerebellum tissue

IF/ICC : HeLa cells,

Background Information

Storage

Storage:

Store at -20°C. Stable for one year after shipment.

Storage Buffer:

PBS with 0.02% sodium azide and 50% glycerol, pH7.3

Aliquoting is unnecessary for -20°C storage

For technical support and original validation data for this product please contact:

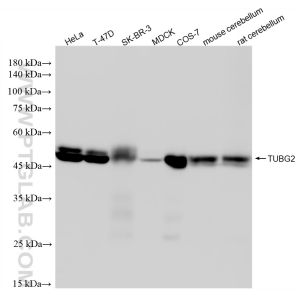
T: 4006900926

E: Proteintech-CN@ptglab.com

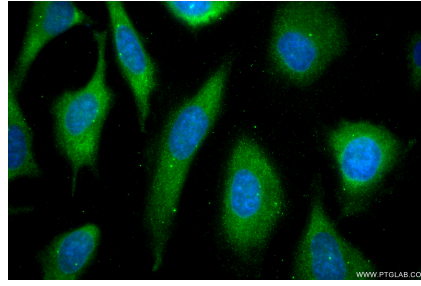
W: ptgcn.com

This product is exclusively available under Proteintech Group brand and is not available to purchase from any other manufacturer.

Selected Validation Data



Various lysates were subjected to SDS PAGE followed by western blot with 87516-1-RR (TUBG2 antibody) at dilution of 1:5000 incubated at room temperature for 1.5 hours.



Immunofluorescent analysis of (-20°C Ethanol) fixed HeLa cells using TUBG2 antibody (87516-1-RR, Clone: 252833C10) at dilution of 1:500 and CoraLite® 488-Conjugated Goat Anti-Rabbit IgG(H+L) (SA00013-2).