

For Research Use Only

# TUBG2 Recombinant monoclonal antibody, PBS Only

Catalog Number:87516-1-PBS



## Basic Information

Catalog Number:

87516-1-PBS

Source:

Rabbit

Isotype:

IgG

Immunogen Catalog Number:

AG27728

GenBank Accession Number:

BC051890

GeneID (NCBI):

27175

UNIPROT ID:

Q9NRH3

Full Name:

tubulin, gamma 2

Calculated MW:

451 aa, 51 kDa

Observed MW:

51 kDa

Purification Method:

Protein A purification

CloneNo.:

252833C10

## Applications

Tested Applications:

WB, IF/ICC, Indirect ELISA

Species Specificity:

human, mouse, rat, canine

## Background Information

### Storage

Storage:

Store at -80°C.

The product is shipped with ice packs. Upon receipt, store it immediately at -80°C

Storage Buffer:

PBS only, pH7.3

For technical support and original validation data for this product please contact:

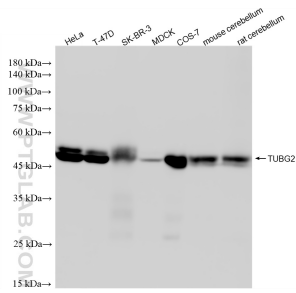
T: 4006900926

E: [Proteintech-CN@ptglab.com](mailto:Proteintech-CN@ptglab.com)

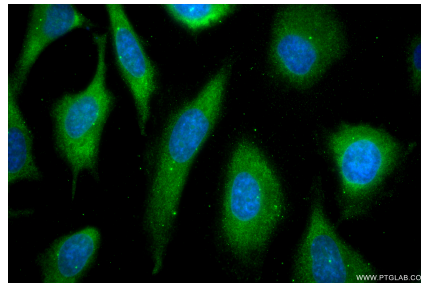
W: [ptgcn.com](http://ptgcn.com)

This product is exclusively available under Proteintech Group brand and is not available to purchase from any other manufacturer.

## Selected Validation Data



Various lysates were subjected to SDS PAGE followed by western blot with 87516-1-RR (TUBG2 antibody) at dilution of 1:5000 incubated at room temperature for 1.5 hours. This data was developed using the same antibody clone with 87516-1-PBS in a different storage buffer formulation.



Immunofluorescent analysis of (-20°C Ethanol) fixed HeLa cells using TUBG2 antibody (87516-1-RR, Clone: 252833C10) at dilution of 1:500 and CoraLite® 488-Conjugated Goat Anti-Rabbit IgG(H+L) (SA00013-2). This data was developed using the same antibody clone with 87516-1-PBS in a different storage buffer formulation.