

For Research Use Only

Phospho-Filamin A (Ser2152) Recombinant monoclonal antibody

Catalog Number: 87513-1-RR



Basic Information

Catalog Number:

87513-1-RR

Source:

Rabbit

Isotype:

IgG

GenBank Accession Number:

NM_001110556

GeneID (NCBI):

2316

UNIPROT ID:

P21333

Full Name:

filamin A, alpha (actin binding protein 280)

Calculated MW:

2647 aa, 280 kDa

Observed MW:

280 kDa

Purification Method:

Protein A purification

CloneNo.:

252855H7

Recommended Dilutions:

WB: 1:2000-1:10000

Applications

Tested Applications:

WB, ELISA

Species Specificity:

human

Positive Controls:

WB : EGF treated A431 cells,

Background Information

FLNA encodes a 280 kDa widely expressed actin binding protein called filamin A which can crosslinks actin filaments and links actin filaments to membrane glycoproteins to form a three-dimensional network. Phospho-Filamin A (Ser2152) is a phosphorylated form of Filamin A (FLNA), which is a large actin-binding protein that plays a crucial role in organizing the cytoskeleton and transducing signals from cell membrane to the cytoskeleton. This phosphorylation event is associated with various cellular functions, including cytoskeletal remodeling, cell migration, and focal adhesion formation. (PMID:29931263)

Storage

Storage:

Store at -20°C. Stable for one year after shipment.

Storage Buffer:

PBS with 0.02% sodium azide and 50% glycerol, pH7.3

Aliquoting is unnecessary for -20°C storage

For technical support and original validation data for this product please contact:

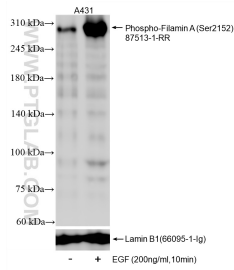
T: 4006900926

E: Proteintech-CN@ptglab.com

W: ptgcn.com

This product is exclusively available under Proteintech Group brand and is not available to purchase from any other manufacturer.

Selected Validation Data



Non-treated A431 cells and EGF treated A431 cells were subjected to SDS PAGE followed by western blot with 87513-1-RR (Phospho-Filamin A (Ser2152) antibody) at dilution of 1:5000 incubated at room temperature for 1.5 hours. The membrane was stripped and re-blotted with Lamin B1 (66095-1-Ig) antibody as a loading control.