

For Research Use Only

# CCRL2 Recombinant monoclonal antibody

Catalog Number: 87505-1-RR



## Basic Information

Catalog Number:

87505-1-RR

Source:

Rabbit

Isotype:

IgG

GenBank Accession Number:

BC025717

GeneID (NCBI):

9034

UNIPROT ID:

O00421

Full Name:

chemokine (C-C motif) receptor-like 2

Calculated MW:

344 aa, 40 kDa

Observed MW:

47 kDa

Purification Method:

Protein A purification

CloneNo.:

252522D6

Recommended Dilutions:

WB: 1:1000-1:8000

## Applications

Tested Applications:

WB, ELISA

Species Specificity:

human

Positive Controls:

WB: HeLa cells, TF-1 cells, HL-60 cells

## Background Information

Chemokine CC motif receptor-like 2 (CCRL2) is a seven-transmembrane domain receptor that shares structural and functional similarities with the family of atypical chemokine receptors (ACKRs) (PMID: 28743719). CCRL2 does not appear to be a signaling receptor, but may have a role in modulating chemokine-triggered immune responses by capturing and internalizing CCL19 or by presenting RARRES2 ligand to CMKLR1, a functional signaling receptors. CCRL2 has been found on almost all hemopoietic cells, including monocytes, macrophages, polymorphonuclear neutrophils (PMNs), T cells, dendritic cells, natural killer cells, and CD34+ progenitor cells, with PMNs expressing the highest levels (PMID: 15188357). CCRL2 is also expressed by barrier cells, such as lymphatic and blood endothelial cells and bronchial and intestinal epithelial cells (PMID: 29056935).

## Storage

Storage:

Store at -20°C. Stable for one year after shipment.

Storage Buffer:

PBS with 0.02% sodium azide and 50% glycerol, pH7.3

Aliquoting is unnecessary for -20°C storage

For technical support and original validation data for this product please contact:

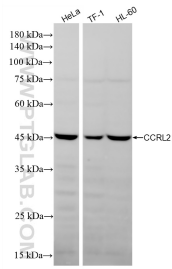
T: 4006900926

E: [Proteintech-CN@ptglab.com](mailto:Proteintech-CN@ptglab.com)

W: [ptgcn.com](http://ptgcn.com)

**This product is exclusively available under Proteintech Group brand and is not available to purchase from any other manufacturer.**

## Selected Validation Data



Various lysates were subjected to SDS PAGE followed by western blot with 87505-1-RR (CCL2 antibody) at dilution of 1:4000 incubated at room temperature for 1.5 hours.