

For Research Use Only

# C14orf39 Recombinant monoclonal antibody, PBS Only (Capture)

Catalog Number:87498-3-PBS



## Basic Information

Catalog Number:

87498-3-PBS

Source:

Rabbit

Isotype:

IgG

Immunogen Catalog Number:

AG33548

GenBank Accession Number:

BC125070

GeneID (NCBI):

317761

UNIPROT ID:

Q8N1H7

Full Name:

chromosome 14 open reading frame  
39

Calculated MW:

587 aa, 68 kDa

Purification Method:

Protein A purification

CloneNo.:

252891D6

## Applications

Tested Applications:

Cytometric bead array, Indirect ELISA

Species Specificity:

human

## Background Information

### Storage

Storage:

Store at -80°C.

**The product is shipped with ice packs. Upon receipt, store it immediately at -80°C**

Storage Buffer:

PBS only, pH7.3

For technical support and original validation data for this product please contact:

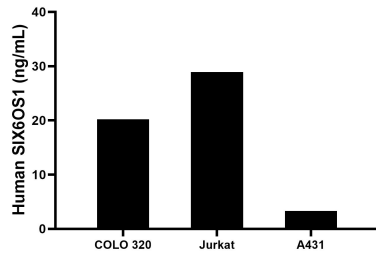
T: 4006900926

E: [Proteintech-CN@ptglab.com](mailto:Proteintech-CN@ptglab.com)

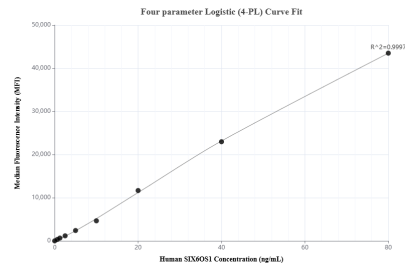
W: [ptgcn.com](http://ptgcn.com)

**This product is exclusively available under Proteintech Group brand and is not available to purchase from any other manufacturer.**

## Selected Validation Data



The mean SIX6OS1 concentration was determined to be 20.2 ng/mL in COLO 320 cell extract based on a 1.2 mg/mL extract load, 28.9 ng/mL in Jurkat cell extract based on a 1.2 mg/mL extract load, 3.3 ng/mL in A431 cell extract based on a 1.2 mg/mL extract load.



Cytometric bead array standard curve of MP03116-1, SIX6OS1 Recombinant Matched Antibody Pair, PBS Only. Capture antibody: 87498-3-PBS. Detection antibody: 87498-2-PBS. Standard: Ag33548. Range: 0.625-80 ng/mL.