

For Research Use Only

PPIL2 Recombinant monoclonal antibody, PBS Only (Detector)

Catalog Number: 87496-2-PBS



Basic Information

Catalog Number: 87496-2-PBS	GenBank Accession Number: NM_148176.2	Purification Method: Protein A purification
Source: Rabbit	GeneID (NCBI): 23759	CloneNo.: 252848E6
Isotype: IgG	UNIPROT ID: Q13356-2	
Immunogen Catalog Number: EG6018	Full Name: peptidylprolyl isomerase (cyclophilin)-like 2	
	Calculated MW: 59 kDa	

Applications

Tested Applications:
Cytometric bead array, Indirect ELISA

Species Specificity:
human

Background Information

Storage

Storage:
Store at -80°C.
The product is shipped with ice packs. Upon receipt, store it immediately at -80°C

Storage Buffer:
PBS only, pH7.3

For technical support and original validation data for this product please contact:

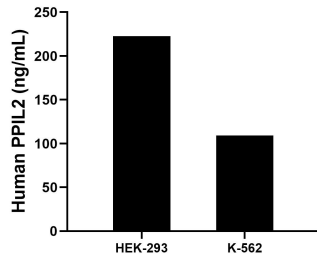
T: 4006900926

E: Proteintech-CN@ptglab.com

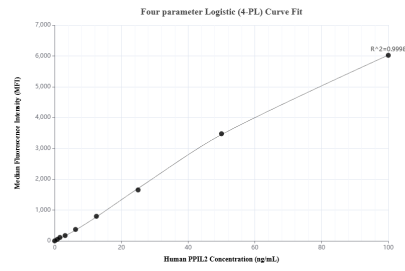
W: ptgcn.com

This product is exclusively available under Proteintech Group brand and is not available to purchase from any other manufacturer.

Selected Validation Data



The mean PPIL2 concentration was determined to be 222.6 ng/mL in HEK-293 cell extract based on a 1.2 mg/mL extract load, 109.1 ng/mL in K-562 cell extract based on a 1.2 mg/mL extract load.



Cytometric bead array standard curve of MP03072-1, PPIL2 Recombinant Matched Antibody Pair, PBS Only. Capture antibody: 87496-3-PBS. Detection antibody: 87496-2-PBS. Standard: Eg6018. Range: 0.781-100 ng/mL