

For Research Use Only

# Mouse Integrin Beta 1/CD29 Recombinant monoclonal antibody, PBS Only

Catalog Number: 87495-1-PBS



## Basic Information

<b>Catalog Number:</b> 87495-1-PBS	<b>GenBank Accession Number:</b> GeneID (NCBI): 16412	<b>Purification Method:</b> Protein A purification
<b>Source:</b> Rabbit	<b>UNIPROT ID:</b> P09055	<b>CloneNo.:</b> 252764F11
<b>Isotype:</b> IgG	<b>Full Name:</b> integrin beta 1 (fibronectin receptor beta)	
<b>Immunogen Catalog Number:</b> EG10460	<b>Observed MW:</b> 130-140 kDa	

## Applications

**Tested Applications:**  
WB, IHC, IF/ICC, Indirect ELISA

**Species Specificity:**  
mouse

## Background Information

Integrin beta-1 (ITGB1), also named as CD29, is a single-chain type I glycoprotein that is expressed in a heterodimeric complex with one of six distinct  $\alpha$  subunits, comprising the very late activation antigen (VLA) subfamily of adhesion receptors. It is one of the essential surface molecules expressed on human MSCs from bone marrow and other sources. The  $\beta$  1 subunit is also broadly expressed on lymphocytes and monocytes, with weaker expression on granulocytes, and is not expressed on erythrocytes. These receptors are involved in a variety of cell-cell and cell-matrix interactions.

## Storage

**Storage:**  
Store at -80°C.  
**The product is shipped with ice packs. Upon receipt, store it immediately at -80°C**

**Storage Buffer:**  
PBS only, pH7.3

For technical support and original validation data for this product please contact:

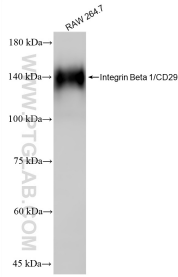
T: 4006900926

E: Proteintech-CN@ptglab.com

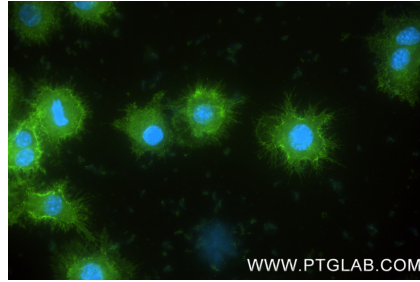
W: ptgcn.com

**This product is exclusively available under Proteintech Group brand and is not available to purchase from any other manufacturer.**

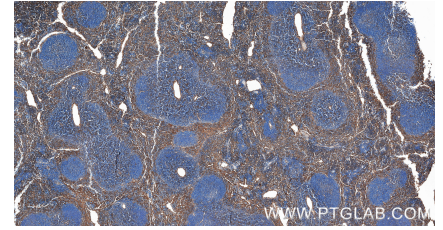
## Selected Validation Data



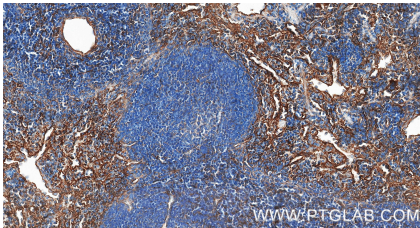
RAW 264.7 cells lysates were subjected to SDS PAGE followed by western blot with 87495-1-RR (ITB1 antibody) at dilution of 1:2000 incubated at room temperature for 1.5 hours. This data was developed using the same antibody clone with 87495-1-PBS in a different storage buffer formulation.



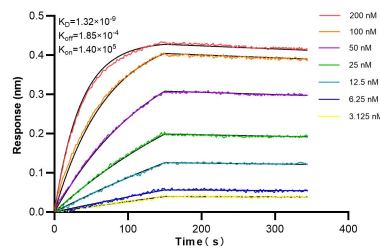
Immunofluorescent analysis of (4% PFA) fixed RAW 264.7 cells using Integrin Beta 1/CD29 antibody (87495-1-RR, Clone: 252764F11) at dilution of 1:200 and CoraLite®488-Conjugated Goat Anti-Rabbit IgG(H+L) (SA00013-2). This data was developed using the same antibody clone with 87495-1-PBS in a different storage buffer formulation.



Immunohistochemical analysis of paraffin-embedded mouse spleen tissue slide using 87495-1-RR (Integrin Beta 1/CD29 antibody) at dilution of 1:1000 (under 10x lens). Heat mediated antigen retrieval with Tris-EDTA buffer (pH 9.0). This data was developed using the same antibody clone with 87495-1-PBS in a different storage buffer formulation.



Immunohistochemical analysis of paraffin-embedded mouse spleen tissue slide using 87495-1-RR (Integrin Beta 1/CD29 antibody) at dilution of 1:1000 (under 40x lens). Heat mediated antigen retrieval with Tris-EDTA buffer (pH 9.0). This data was developed using the same antibody clone with 87495-1-PBS in a different storage buffer formulation.



Biolayer interferometry (BLI) kinetic assays of 87495-1-RR against Mouse Integrin Beta 1/CD29 were performed. The affinity constant is  $1.32 \times 10^9$ .