

For Research Use Only

Mouse CD280/Mrc2 Recombinant monoclonal antibody, PBS Only (Detector)

Catalog Number: 87494-1-PBS



Basic Information

Catalog Number: 87494-1-PBS	GenBank Accession Number: NM_008626.3	Purification Method: Protein A purification
Source: Rabbit	GeneID (NCBI): 17534	CloneNo.: 252048F11
Isotype: IgG	UNIPROT ID: Q64449-1	
Immunogen Catalog Number: EG6310	Full Name: mannose receptor, C type 2	
	Calculated MW: 167 kDa	

Applications

Tested Applications:
Cytometric bead array, Indirect ELISA

Species Specificity:
mouse

Background Information

Storage

Storage:
Store at -80°C.
The product is shipped with ice packs. Upon receipt, store it immediately at -80°C

Storage Buffer:
PBS only, pH7.3

For technical support and original validation data for this product please contact:

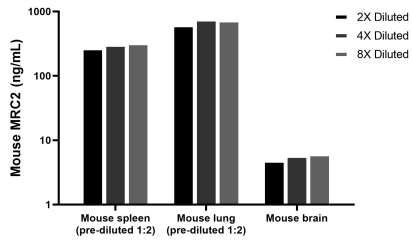
T: 4006900926

E: Proteintech-CN@ptglab.com

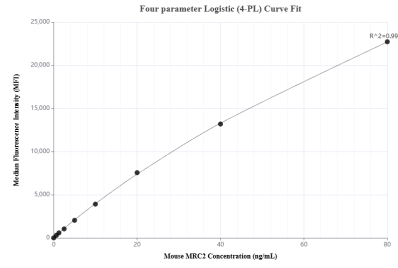
W: ptgcn.com

This product is exclusively available under Proteintech Group brand and is not available to purchase from any other manufacturer.

Selected Validation Data



The mean MRC2 concentration was determined to be 298.7 ng/mL in Mouse spleen tissue extract based on a 6.4 mg/mL extract load, 698.0 ng/mL in Mouse lung tissue extract based on a 5.0 mg/mL extract load, 5.5 ng/mL in Mouse brain tissue extract based on a 3.2 mg/mL extract load.



Cytometric bead array standard curve of MP03031-1, MOUSE MRC2 Recombinant Matched Antibody Pair, PBS Only. Capture antibody: 87494-2-PBS. Detection antibody: 87494-1-PBS. Standard: Eg6310. Range: 0.625-80 ng/mL.