

For Research Use Only

Mouse CD18 Recombinant monoclonal antibody, PBS Only (Detector)

Catalog Number:87481-2-PBS



Basic Information

Catalog Number: 87481-2-PBS	GenBank Accession Number: GeneID (NCBI): 16414	Purification Method: Protein A purification
Source: Rabbit	Full Name: integrin beta 2	CloneNo.: 252753A4
Isotype: IgG	Observed MW: 85-90 kDa	
Immunogen Catalog Number: EG10459		

Applications

Tested Applications:
WB, IHC, Cytometric bead array, Indirect ELISA

Species Specificity:
mouse

Background Information

CD18, also known as integrin beta-2, is a transmembrane protein that forms heterodimers with CD11a, CD11b, CD11c, CD11d (PMID: 1968349). CD11a/CD18 (LFA-1) is expressed by all leukocytes, while CD11b/CD18 (Mac-1) and CD11c/CD18 (p150,95) are normally restricted to expression on monocytes, macrophages, polymorphonuclear lymphocytes (PMNs), and natural killer cells (PMID: 1968349; 3109455; 10946284). CD18 plays an important role in mediating cell adhesion during the immune response, and defects of CD18 cause leukocyte adhesion deficiency (PMID: 3594570).

Storage

Storage:
Store at -80°C.
The product is shipped with ice packs. Upon receipt, store it immediately at -80°C

Storage Buffer:
PBS only, pH7.3

For technical support and original validation data for this product please contact:

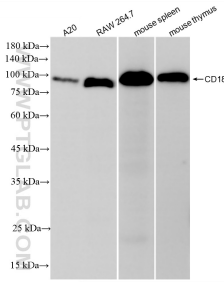
T: 4006900926

E: Proteintech-CN@ptglab.com

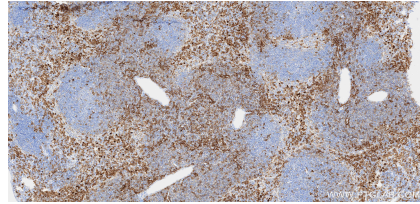
W: ptgcn.com

This product is exclusively available under Proteintech Group brand and is not available to purchase from any other manufacturer.

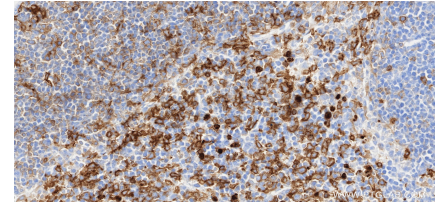
Selected Validation Data



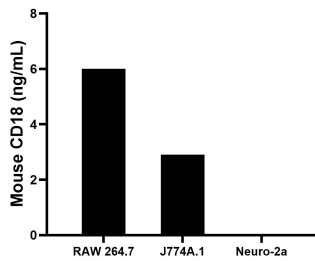
Various lysates were subjected to SDS PAGE followed by western blot with 87481-2-RR (ITB2 antibody) at dilution of 1:10000 incubated at room temperature for 1.5 hours. This data was developed using the same antibody clone with 87481-2-PBS in a different storage buffer formulation.



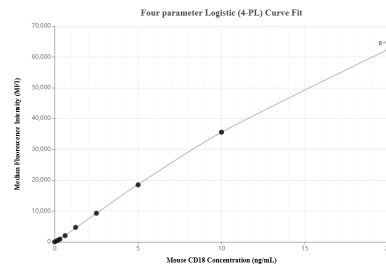
Immunohistochemical analysis of paraffin-embedded mouse spleen tissue slide using 87481-2-RR (CD18 antibody) at dilution of 1:1000 (under 10x lens). Heat mediated antigen retrieval with Tris-EDTA buffer (pH 9.0). This data was developed using the same antibody clone with 87481-2-PBS in a different storage buffer formulation.



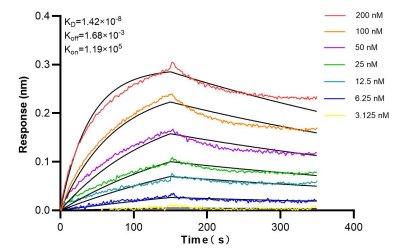
Immunohistochemical analysis of paraffin-embedded mouse spleen tissue slide using 87481-2-RR (CD18 antibody) at dilution of 1:1000 (under 40x lens). Heat mediated antigen retrieval with Tris-EDTA buffer (pH 9.0). This data was developed using the same antibody clone with 87481-2-PBS in a different storage buffer formulation.



The mean CD18 concentration was determined to be 6.0 ng/mL in RAW 264.7 cell extract based on a 1.2 mg/mL extract load, 2.9 ng/mL in J774A.1 cell extract based on a 1.3 mg/mL extract load, Neuro-2a cell extract were served as a negative control.



Cytometric bead array standard curve of MP03055-1, MOUSE CD18 Recombinant Matched Antibody Pair, PBS Only. Capture antibody: 87481-3-PBS. Detection antibody: 87481-2-PBS. Standard: Eg10459. Range: 0.156-20 ng/mL.



Bi-layer interferometry (BLI) kinetic assays of 87481-2-RR against Mouse CD18 were performed. The affinity constant is 14.2 nM.