

For Research Use Only

# CHP1 Recombinant monoclonal antibody, PBS Only (Capture)

Catalog Number: 87479-5-PBS



## Basic Information

Catalog Number:

87479-5-PBS

Source:

Rabbit

Isotype:

IgG

Immunogen Catalog Number:

EG5746

GenBank Accession Number:

NM\_007236.5

GeneID (NCBI):

11261

UNIPROT ID:

Q99653

Full Name:

calcium binding protein P22

Calculated MW:

22 kDa

Purification Method:

Protein A purification

CloneNo.:

252725G8

## Applications

Tested Applications:

Sandwich ELISA, Indirect ELISA

Species Specificity:

human

## Background Information

### Storage

Storage:

Store at -80°C.

The product is shipped with ice packs. Upon receipt, store it immediately at -80°C

Storage Buffer:

PBS only, pH7.3

For technical support and original validation data for this product please contact:

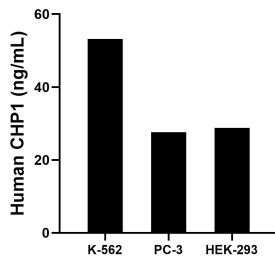
T: 4006900926

E: [Proteintech-CN@ptglab.com](mailto:Proteintech-CN@ptglab.com)

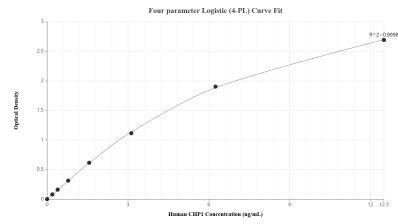
W: [ptgcn.com](http://ptgcn.com)

This product is exclusively available under Proteintech Group brand and is not available to purchase from any other manufacturer.

## Selected Validation Data



The mean CHP1 concentration was determined to be 53.22 ng/mL in K-562 cell extract based on a 1.20 mg/mL extract load, 27.64 ng/mL in PC-3 cell extract based on a 1.30 mg/mL extract load and 28.79 ng/mL in HEK-293 cell extract based on a 1.20 mg/mL extract load.



Sandwich ELISA standard curve of MP03054-2, Human CHP1 Recombinant Matched Antibody Pair - PBS only. 87479-5-PBS was coated to a plate as the capture antibody and incubated with serial dilutions of standard Eg5746. 87479-3-PBS was HRP conjugated as the detection antibody. Range: 0.195-12.5 ng/mL