

For Research Use Only

CHP1 Recombinant monoclonal antibody, PBS Only (Capture)

Catalog Number: 87479-4-PBS



Basic Information

Catalog Number: 87479-4-PBS	GenBank Accession Number: NM_007236.5	Purification Method: Protein A purification
Source: Rabbit	GeneID (NCBI): 11261	CloneNo.: 252725B12
Isotype: IgG	UNIPROT ID: Q99653	
Immunogen Catalog Number: EG5746	Full Name: calcium binding protein P22	
	Calculated MW: 22 kDa	

Applications

Tested Applications:
Cytometric bead array, Indirect ELISA

Species Specificity:
human

Background Information

Storage

Storage:
Store at -80°C.
The product is shipped with ice packs. Upon receipt, store it immediately at -80°C

Storage Buffer:
PBS only, pH7.3

For technical support and original validation data for this product please contact:

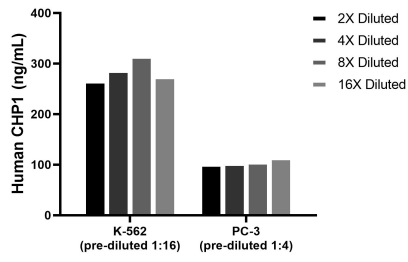
T: 4006900926

E: Proteintech-CN@ptglab.com

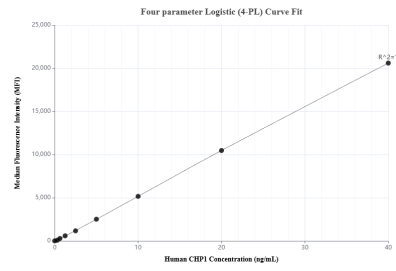
W: ptgcn.com

This product is exclusively available under Proteintech Group brand and is not available to purchase from any other manufacturer.

Selected Validation Data



The mean CHP1 concentration was determined to be 285.0 ng/mL in K-562 cell extract based on a 1.2 mg/mL extract load, 105.5 ng/mL in PC-3 cell extract based on a 1.2 mg/mL extract load.



Cytometric bead array standard curve of MP03054-1, CHP1 Recombinant Matched Antibody Pair, PBS Only. Capture antibody: 87479-4-PBS. Detection antibody: 87479-3-PBS. Standard: Eg5746. Range: 0.312-40 ng/mL.