

For Research Use Only

# Mouse PTPRD Recombinant monoclonal antibody, PBS Only (Detector)

Catalog Number: 87472-3-PBS



## Basic Information

<b>Catalog Number:</b> 87472-3-PBS	<b>GenBank Accession Number:</b> /	<b>Purification Method:</b> Protein A purification
<b>Source:</b> Rabbit	<b>GeneID (NCBI):</b> 19266	<b>CloneNo.:</b> 252819H1
<b>Isotype:</b> IgG	<b>UNIPROT ID:</b> Q64487-4	
<b>Immunogen Catalog Number:</b> EG6916	<b>Full Name:</b> protein tyrosine phosphatase, receptor type, D	
	<b>Calculated MW:</b> 214 kDa	

## Applications

**Tested Applications:**  
Cytometric bead array, Indirect ELISA

**Species Specificity:**  
mouse

## Background Information

### Storage

**Storage:**  
Store at -80°C.  
**The product is shipped with ice packs. Upon receipt, store it immediately at -80°C**

**Storage Buffer:**  
PBS only, pH7.3

For technical support and original validation data for this product please contact:

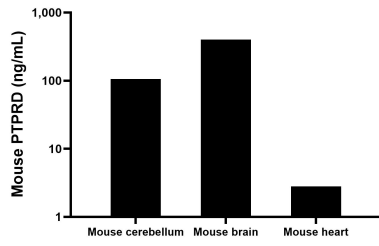
T: 4006900926

E: [Proteintech-CN@ptglab.com](mailto:Proteintech-CN@ptglab.com)

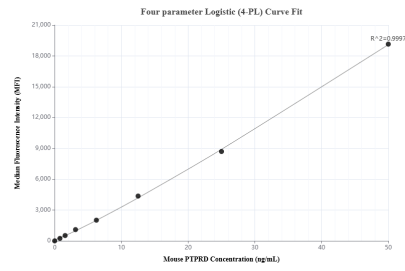
W: [ptgcn.com](http://ptgcn.com)

**This product is exclusively available under Proteintech Group brand and is not available to purchase from any other manufacturer.**

## Selected Validation Data



The mean PTPRD concentration was determined to be 105.6 ng/mL in mouse cerebellum tissue extract based on a 6.0 mg/mL extract load, 402.8 ng/mL in mouse brain tissue extract based on a 3.2 mg/mL extract load, 2.8 ng/mL in mouse heart tissue extract based on a 5.4 mg/mL extract load.



Cytometric bead array standard curve of MP03070-1, MOUSE PTPRD Recombinant Matched Antibody Pair, PBS Only. Capture antibody: 87472-4-PBS. Detection antibody: 87472-3-PBS. Standard: Eg6916. Range: 0.781-50 ng/mL.