

For Research Use Only

Ephrin A1 Recombinant monoclonal antibody, PBS Only (Capture)

Catalog Number: 87470-4-PBS



Basic Information

Catalog Number: 87470-4-PBS	GenBank Accession Number: NM_004428.3	Purification Method: Protein A purification
Source: Rabbit	GeneID (NCBI): 1942	CloneNo.: 25222288
Isotype: IgG	UNIPROT ID: P20827-1	
Immunogen Catalog Number: EG5498	Full Name: ephrin-A1	
	Calculated MW: 24 kDa	

Applications

Tested Applications:
Cytometric bead array, Sandwich ELISA, Indirect ELISA

Species Specificity:
human

Background Information

Storage

Storage:
Store at -80°C.
The product is shipped with ice packs. Upon receipt, store it immediately at -80°C

Storage Buffer:
PBS only, pH7.3

For technical support and original validation data for this product please contact:

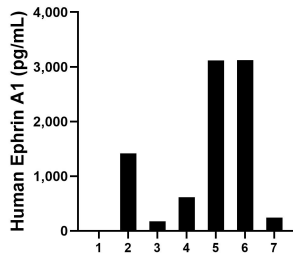
T: 4006900926

E: Proteintech-CN@ptglab.com

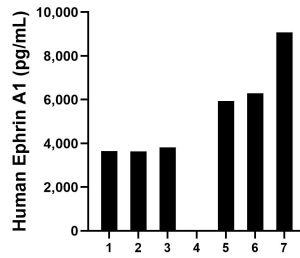
W: ptgcn.com

This product is exclusively available under Proteintech Group brand and is not available to purchase from any other manufacturer.

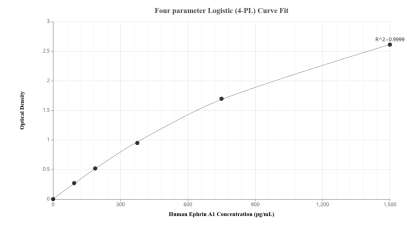
Selected Validation Data



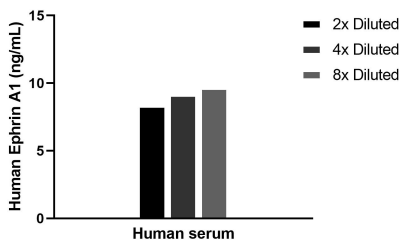
Plasma of seven individual healthy human donors was measured. The Ephrin A1 concentration of detected samples was determined to be 1,243.3 pg/mL with a range of 17.6-3,119.6 pg/mL.



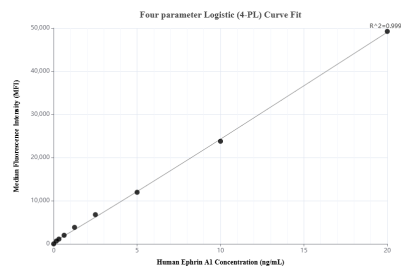
Serum of seven individual healthy human donors was measured. The Ephrin A1 concentration of detected samples was determined to be 4,635.6 pg/mL with a range of 49.2-9,074.2 pg/mL.



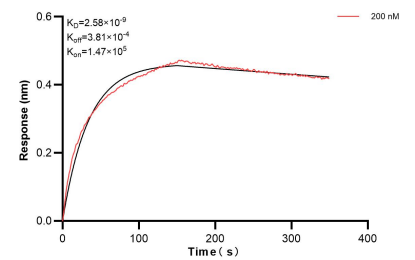
Sandwich ELISA standard curve of MP03040-2, Human Ephrin A1 Recombinant Matched Antibody Pair - PBS only. 87470-4-PBS was coated to a plate as the capture antibody and incubated with serial dilutions of standard Eg5498. 87470-5-PBS was HRP conjugated as the detection antibody. Range: 93.8-1500 pg/mL.



The mean Ephrin A1 concentration was determined to be 9.0 ng/mL in human serum.



Cytometric bead array standard curve of MP03040-1, Ephrin A1 Recombinant Matched Antibody Pair, PBS Only. Capture antibody: 87470-4-PBS. Detection antibody: 87470-3-PBS. Standard: Eg5498. Range: 0.156-20 ng/mL.



Bi-layer interferometry (BLI) kinetic assay of 87470-4-PBS against Human Ephrin A1 was performed. The affinity constant is 2.58 nM.