

For Research Use Only

Ephrin A1 Recombinant monoclonal antibody, PBS Only (Detector)

Catalog Number: 87470-3-PBS



Basic Information

| | | |
|--|---|---|
| Catalog Number: 87470-3-PBS | GenBank Accession Number: NM_004428.3 | Purification Method: Protein A purification |
| Source: Rabbit | GeneID (NCBI): 1942 | CloneNo.: 252222D8 |
| Isotype: IgG | UNIPROT ID: P20827-1 | |
| Immunogen Catalog Number: EG5498 | Full Name: ephrin-A1 | |
| | Calculated MW: 24 kDa | |

Applications

Tested Applications:
Cytometric bead array, Indirect ELISA

Species Specificity:
human

Background Information

Storage

Storage:
Store at -80°C.
The product is shipped with ice packs. Upon receipt, store it immediately at -80°C

Storage Buffer:
PBS only, pH7.3

For technical support and original validation data for this product please contact:

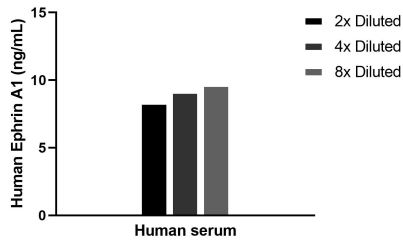
T: 4006900926

E: Proteintech-CN@ptglab.com

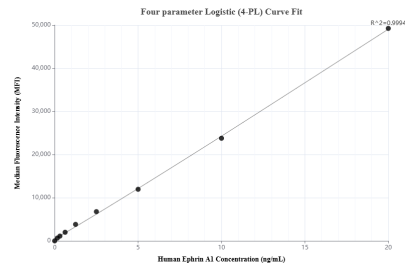
W: ptgcn.com

This product is exclusively available under Proteintech Group brand and is not available to purchase from any other manufacturer.

Selected Validation Data



The mean Ephrin A1 concentration was determined to be 9.0 ng/mL in human serum.



Cytometric bead array standard curve of MP03040-1, Ephrin A1 Recombinant Matched Antibody Pair, PBS Only. Capture antibody: 87470-4-PBS. Detection antibody: 87470-3-PBS. Standard: Eg5498. Range: 0.156-20 ng/mL.