

For Research Use Only

# ST6GAL1 Recombinant monoclonal antibody

Catalog Number: 87468-1-RR



## Basic Information

<b>Catalog Number:</b> 87468-1-RR	<b>GenBank Accession Number:</b> NM_001252505.1	<b>Purification Method:</b> Protein A purification
<b>Source:</b> Rabbit	<b>GeneID (NCBI):</b> 20440	<b>CloneNo.:</b> 251963F1
<b>Isotype:</b> IgG	<b>UNIPROT ID:</b> Q64685	<b>Recommended Dilutions:</b> WB: 1:500-1:2000 IHC: 1:500-1:2000 IF/ICC: 1:200-1:800
<b>Immunogen Catalog Number:</b> EG5251	<b>Full Name:</b> beta galactoside alpha 2,6 sialyltransferase 1	
	<b>Calculated MW:</b> 47 kDa	
	<b>Observed MW:</b> 39-42 kDa and 49-50 kDa	

## Applications

**Tested Applications:**  
WB, IHC, IF/ICC, ELISA

**Species Specificity:**  
mouse, rat

**Note-IHC: suggested antigen retrieval with TE buffer pH 9.0; (\*) Alternatively, antigen retrieval may be performed with citrate buffer pH 6.0**

**Positive Controls:**

**WB:** 4T1 cells, mouse liver tissue, rat liver tissue

**IHC:** mouse liver tissue, mouse spleen tissue

**IF/ICC:** 4T1 cells,

## Background Information

ST6GAL1 is a sialyltransferase mediating the glycosylation of proteins and lipids to form functionally important glycoproteins and glycolipids in the Golgi compartment. It is principally expressed in liver, placenta, and skeletal muscle (PMID: 15049997, PMID: 23358684). Two molecular forms of ST6GAL1 are generally observed, a larger 49-50 kDa and a smaller 39-42 kDa form, representing its full-length and the smaller soluble catalytic domain, respectively (PMID: 35676533, PMID: 35661210).

## Storage

**Storage:**

Store at -20°C. Stable for one year after shipment.

**Storage Buffer:**

PBS with 0.02% sodium azide and 50% glycerol, pH7.3

Aliquoting is unnecessary for -20°C storage

For technical support and original validation data for this product please contact:

T: 4006900926

E: [Proteintech-CN@ptglab.com](mailto:Proteintech-CN@ptglab.com)

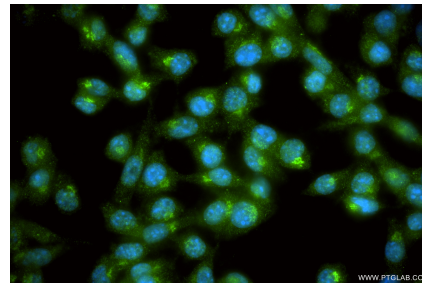
W: [ptgcn.com](http://ptgcn.com)

**This product is exclusively available under Proteintech Group brand and is not available to purchase from any other manufacturer.**

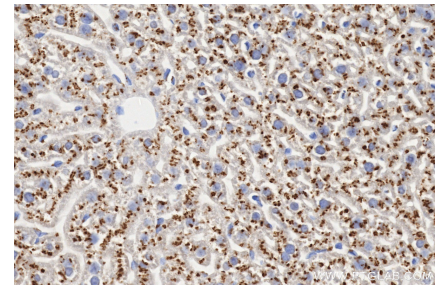
## Selected Validation Data



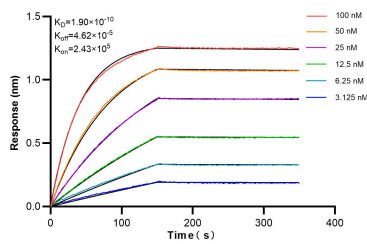
4T1 cells were subjected to SDS PAGE followed by western blot with 87468-1-RR (ST6GAL1 antibody) at dilution of 1:1000 incubated at room temperature for 1.5 hours.



Immunofluorescent analysis of (4% PFA) fixed 4T1 cells using ST6GAL1 antibody (87468-1-RR, Clone: 251963F1 ) at dilution of 1:400 and CoraLite®488-Conjugated Goat Anti-Rabbit IgG(H+L) (SA00013-2).



Immunohistochemical analysis of paraffin-embedded mouse liver tissue slide using 87468-1-RR (ST6GAL1 antibody) at dilution of 1:1000 (under 40x lens). Heat mediated antigen retrieval with Tris-EDTA buffer (pH 9.0).



Biolayer interferometry (BLI) kinetic assays of 87468-1-RR against Mouse ST6GAL1 were performed. The affinity constant is 0.19 nM.