

For Research Use Only

Mouse ST6GAL1 Recombinant monoclonal antibody, PBS Only (Capture)

Catalog Number: 87468-1-PBS



Basic Information

Catalog Number: 87468-1-PBS	GenBank Accession Number: NM_001252505.1	Purification Method: Protein A purification
Source: Rabbit	GeneID (NCBI): 20440	CloneNo.: 251963F1
Isotype: IgG	UNIPROT ID: Q64685	
Immunogen Catalog Number: EG5251	Full Name: beta galactoside alpha 2,6 sialyltransferase 1	
	Calculated MW: 47 kDa	
	Observed MW: 39-42 kDa and 49-50 kDa	

Applications

Tested Applications:
WB, IHC, IF/ICC, Sandwich ELISA, Indirect ELISA

Species Specificity:
mouse, rat

Background Information

ST6GAL1 is a sialyltransferase mediating the glycosylation of proteins and lipids to form functionally important glycoproteins and glycolipids in the Golgi compartment. It is principally expressed in liver, placenta, and skeletal muscle (PMID: 15049997, PMID: 23358684). Two molecular forms of ST6GAL1 are generally observed, a larger 49-50 kDa and a smaller 39-42 kDa form, representing its full-length and the smaller soluble catalytic domain, respectively (PMID: 35676533, PMID: 35661210).

Storage

Storage:
Store at -80°C.
The product is shipped with ice packs. Upon receipt, store it immediately at -80°C

Storage Buffer:
PBS only, pH7.3

For technical support and original validation data for this product please contact:

T: 4006900926

E: Proteintech-CN@ptglab.com

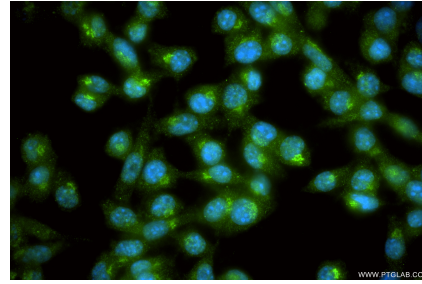
W: ptgcn.com

This product is exclusively available under Proteintech Group brand and is not available to purchase from any other manufacturer.

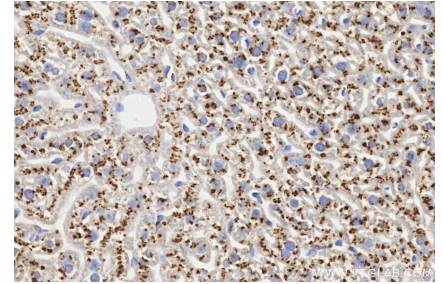
Selected Validation Data



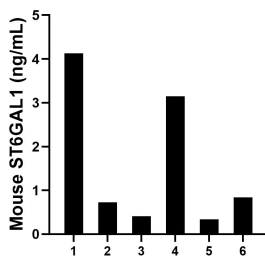
4T1 cells were subjected to SDS PAGE followed by western blot with 87468-1-RR (ST6GAL1 antibody) at dilution of 1:1000 incubated at room temperature for 1.5 hours. This data was developed using the same antibody clone with 87468-1-PBS in a different storage buffer formulation.



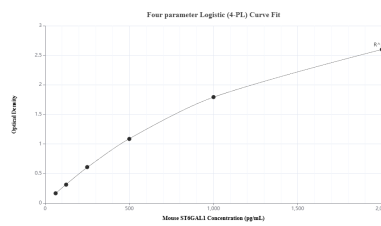
Immunofluorescent analysis of (4% PFA) fixed 4T1 cells using ST6GAL1 antibody (87468-1-RR, Clone: 251963F1) at dilution of 1:400 and CoraLite®488-Conjugated Goat Anti-Rabbit IgG(H+L) (SA00013-2). This data was developed using the same antibody clone with 87468-1-PBS in a different storage buffer formulation.



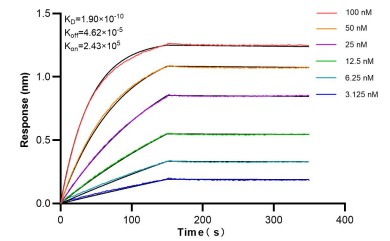
Immunohistochemical analysis of paraffin-embedded mouse liver tissue slide using 87468-1-RR (ST6GAL1 antibody) at dilution of 1:1000 (under 40x lens). Heat mediated antigen retrieval with Tris-EDTA buffer (pH 9.0). This data was developed using the same antibody clone with 87468-1-PBS in a different storage buffer formulation.



Serum of six mice was measured. The mouse ST6GAL1 concentration of detected samples was determined to be 1.60 ng/mL with a range of 0.34 - 4.13 ng/mL.



Sandwich ELISA standard curve of MP03142-1, Mouse ST6GAL1 Recombinant Matched Antibody Pair - PBS only. 87468-1-PBS was coated to a plate as the capture antibody and incubated with serial dilutions of standard Eg5251. 87468-2-PBS was HRP conjugated as the detection antibody. Range: 62.5-2000 pg/mL



Bi-layer interferometry (BLI) kinetic assays of 87468-1-RR against Mouse ST6GAL1 were performed. The affinity constant is 0.19 nM.