

For Research Use Only

# Mouse ITB5 Recombinant monoclonal antibody, PBS Only (Capture)

Catalog Number:87465-2-PBS



## Basic Information

Catalog Number:

87465-2-PBS

Source:

Rabbit

Isotype:

IgG

Immunogen Catalog Number:

EG10456

GenBank Accession Number:

GeneID (NCBI):

16419

Full Name:

integrin beta 5

Purification Method:

Protein A purification

CloneNo.:

252748C4

## Applications

Tested Applications:

Sandwich ELISA, Indirect ELISA

Species Specificity:

mouse

## Background Information

### Storage

Storage:

Store at -80°C.

**The product is shipped with ice packs. Upon receipt, store it immediately at -80°C**

Storage Buffer:

PBS only, pH7.3

For technical support and original validation data for this product please contact:

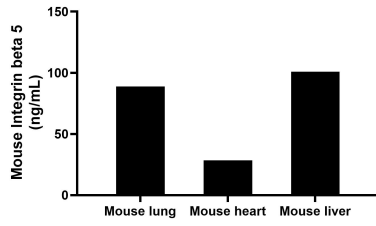
T: 4006900926

E: [Proteintech-CN@ptglab.com](mailto:Proteintech-CN@ptglab.com)

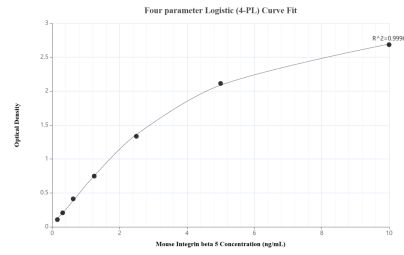
W: [ptgcn.com](http://ptgcn.com)

**This product is exclusively available under Proteintech Group brand and is not available to purchase from any other manufacturer.**

## Selected Validation Data



The mean Integrin beta 5 concentration was determined to be 88.87 ng/mL in mouse lung extract based on a 5.00 mg/mL extract load, 28.42 ng/mL in mouse heart extract based on a 5.40 mg/mL extract load and 100.97 ng/mL in mouse liver extract based on a 8.40 mg/mL extract load.



Sandwich ELISA standard curve of MP03166-1, Mouse Integrin beta 5 Recombinant Matched Antibody Pair - PBS only. 87465-2-PBS was coated to a plate as the capture antibody and incubated with serial dilutions of standard Eg10456. 87465-1-PBS was HRP conjugated as the detection antibody. Range: 0.156-10 ng/mL.