

For Research Use Only

Integrin beta 5 Recombinant monoclonal antibody

Catalog Number:87465-1-RR



Basic Information

Catalog Number:

87465-1-RR

Source:

Rabbit

Isotype:

IgG

Immunogen Catalog Number:

EG10456

GenBank Accession Number:

GeneID (NCBI):

16419

Full Name:

integrin beta 5

Observed MW:

100 kDa

Purification Method:

Protein A purification

CloneNo.:

252748B7

Recommended Dilutions:

WB: 1:2000-1:10000

IHC: 1:500-1:2000

IF/ICC: 1:200-1:800

Applications

Tested Applications:

WB, IHC, IF/ICC, ELISA

Species Specificity:

mouse, rat

Note-IHC: suggested antigen retrieval with TE buffer pH 9.0; (*) Alternatively, antigen retrieval may be performed with citrate buffer pH 6.0

Positive Controls:

WB : Neuro-2a cells, C6 cells, mouse lung tissue

IHC : mouse colon tissue,

IF/ICC : RAW 264.7 cells,

Background Information

Integrin beta-5 (ITGB5) is expected to be located in the plasma membrane and mitochondria, which is ubiquitinated in placenta and gall bladder. ITGB5 is a member of integrins and was proved to be associated with pathological processes in several tumors (PMID: 34966851). It is reported that TGB5 is highly expressed in hepatocellular carcinoma (HCC), and miR-185 regulates the expression of β - catenin through the ITGB5-dependent manner and affects the proliferation and migration of HCC cells (PMID: 35223869).

Storage

Storage:

Store at -20°C. Stable for one year after shipment.

Storage Buffer:

PBS with 0.02% sodium azide and 50% glycerol, pH7.3

Aliquoting is unnecessary for -20°C storage

For technical support and original validation data for this product please contact:

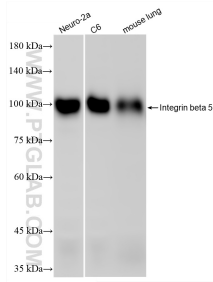
T: 4006900926

E: Proteintech-CN@ptglab.com

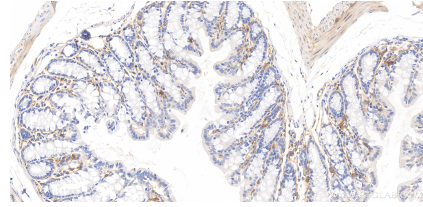
W: ptgcn.com

This product is exclusively available under Proteintech Group brand and is not available to purchase from any other manufacturer.

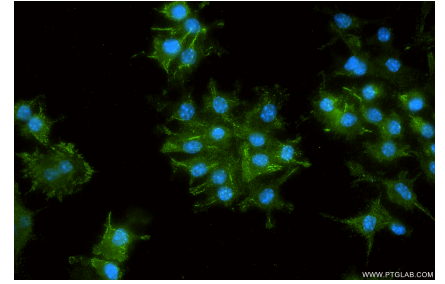
Selected Validation Data



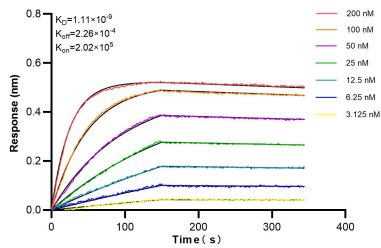
Various lysates were subjected to SDS PAGE followed by western blot with 87465-1-RR (ITB5 antibody) at dilution of 1:5000 incubated at room temperature for 1.5 hours.



Immunohistochemical analysis of paraffin-embedded mouse colon tissue slide using 87465-1-RR (Integrin beta 5 antibody) at dilution of 1:1000 (under 20x lens). Heat mediated antigen retrieval with Tris-EDTA buffer (pH 9.0).



Immunofluorescent analysis of (4% PFA) fixed RAW 264.7 cells using Integrin beta 5 antibody (87465-1-RR, Clone: 252748B7) at dilution of 1:400 and CoraLite® 488-Conjugated Goat Anti-Rabbit IgG(H+L) (SA00013-2).



Biolayer interferometry (BLI) kinetic assays of 87465-1-RR against Mouse Integrin beta 5 were performed. The affinity constant is 1.11 nM.