

For Research Use Only

# Mouse Mertk Recombinant monoclonal antibody, PBS Only (Capture)

Catalog Number: 87457-4-PBS



## Basic Information

|  |   |   |
|--|---|---|
| <b>Catalog Number:</b><br>87457-4-PBS      | <b>GenBank Accession Number:</b><br>NM_008587.2           | <b>Purification Method:</b><br>Protein A purification |
| <b>Source:</b><br>Rabbit                   | <b>GeneID (NCBI):</b><br>17289                            | <b>CloneNo.:</b><br>250615F2                          |
| <b>Isotype:</b><br>IgG                     | <b>UNIPROT ID:</b><br>Q60805                              |   |
| <b>Immunogen Catalog Number:</b><br>EG2866 | <b>Full Name:</b><br>c-mer proto-oncogene tyrosine kinase |   |
|  | <b>Calculated MW:</b><br>110 kDa                          |   |

## Applications

**Tested Applications:**  
Sandwich ELISA, Indirect ELISA

**Species Specificity:**  
mouse

## Background Information

### Storage

**Storage:**  
Store at -80°C.  
**The product is shipped with ice packs. Upon receipt, store it immediately at -80°C**

**Storage Buffer:**  
PBS only, pH7.3

For technical support and original validation data for this product please contact:

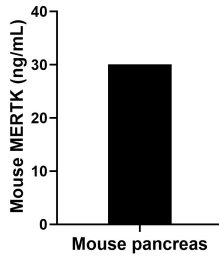
T: 4006900926

E: [Proteintech-CN@ptglab.com](mailto:Proteintech-CN@ptglab.com)

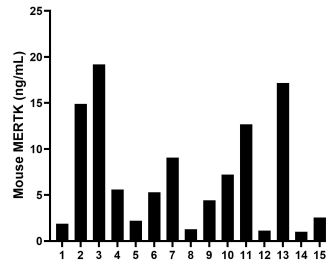
W: [ptgcn.com](http://ptgcn.com)

**This product is exclusively available under Proteintech Group brand and is not available to purchase from any other manufacturer.**

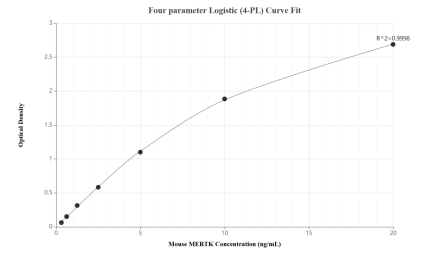
## Selected Validation Data



The mean MERTK concentration was determined to be 30.09 ng/mL in mouse pancreas extract based on a 10.60 mg/mL extract load.



Serum of fifteen mice was measured. The MERTK concentration of detected samples was determined to be 7.04 ng/mL with a range of 1.00-19.20 ng/mL.



Sandwich ELISA standard curve of MP03042-2, Mouse MERTK Recombinant Matched Antibody Pair - PBS only. 87457-4-PBS was coated to a plate as the capture antibody and incubated with serial dilutions of standard Eg2866. 87457-3-PBS was HRP conjugated as the detection antibody. Range: 0.313-20 ng/mL.