

For Research Use Only

ABCC6 Recombinant monoclonal antibody, PBS Only (Detector)

Catalog Number: 87456-4-PBS



Basic Information

Catalog Number:

87456-4-PBS

Source:

Rabbit

Isotype:

IgG

GenBank Accession Number:

BC131732

GeneID (NCBI):

368

UNIPROT ID:

O95255

Full Name:

ATP-binding cassette, sub-family C (CFTR/MRP), member 6

Calculated MW:

1503 aa, 165 kDa

Purification Method:

Protein A purification

CloneNo.:

252956H6

Applications

Tested Applications:

Sandwich ELISA, Indirect ELISA

Species Specificity:

human

Background Information

Storage

Storage:

Store at -80°C.

The product is shipped with ice packs. Upon receipt, store it immediately at -80°C

Storage Buffer:

PBS only, pH7.3

For technical support and original validation data for this product please contact:

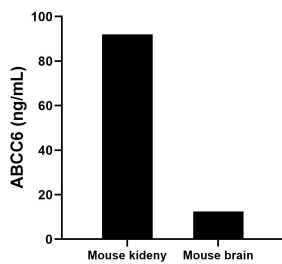
T: 4006900926

E: Proteintech-CN@ptglab.com

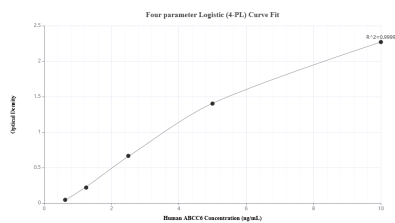
W: ptgcn.com

This product is exclusively available under Proteintech Group brand and is not available to purchase from any other manufacturer.

Selected Validation Data



The mean ABCC6 concentration was determined to be 92.00 ng/mL in mouse kidney tissue extract based on a 8.4 mg/mL extract load and 12.50 ng/mL in mouse brain tissue extract based on a 6.4 mg/mL extract load.



Sandwich ELISA standard curve of MP03056-2, Human ABCC6 Recombinant Matched Antibody Pair - PBS only. 87456-5-PBS was coated to a plate as the capture antibody and incubated with serial dilutions of standard SY03023. 87456-4-PBS was HRP conjugated as the detection antibody. Range: 0.625-10 ng/mL