

For Research Use Only

# ABCC6 Recombinant monoclonal antibody, PBS Only (Capture)

Catalog Number: 87456-3-PBS



## Basic Information

Catalog Number:

87456-3-PBS

Source:

Rabbit

Isotype:

IgG

GenBank Accession Number:

BC131732

GeneID (NCBI):

368

UNIPROT ID:

O95255

Full Name:

ATP-binding cassette, sub-family C (CFTR/MRP), member 6

Calculated MW:

1503 aa, 165 kDa

Purification Method:

Protein A purification

CloneNo.:

252956G4

## Applications

Tested Applications:

Cytometric bead array, Indirect ELISA

Species Specificity:

human

## Background Information

### Storage

Storage:

Store at -80°C.

**The product is shipped with ice packs. Upon receipt, store it immediately at -80°C**

Storage Buffer:

PBS only, pH7.3

For technical support and original validation data for this product please contact:

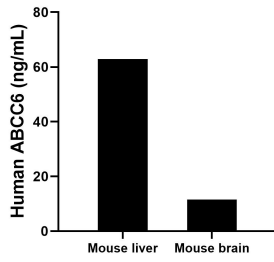
T: 4006900926

E: [Proteintech-CN@ptglab.com](mailto:Proteintech-CN@ptglab.com)

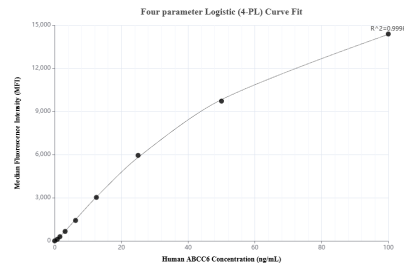
W: [ptgcn.com](http://ptgcn.com)

**This product is exclusively available under Proteintech Group brand and is not available to purchase from any other manufacturer.**

## Selected Validation Data



The mean ABCC6 concentration was determined to be 62.9 ng/mL in mouse liver tissue extract based on a 8.4 mg/mL extract load, 11.5 ng/mL in mouse brain tissue extract based on a 3.2 mg/mL extract load.



Cytometric bead array standard curve of MP03056-1, ABCC6 Recombinant Matched Antibody Pair, PBS Only. Capture antibody: 87456-3-PBS. Detection antibody: 87456-2-PBS. Standard: SY03023. Range: 0.781-100 ng/mL