

For Research Use Only

# Mouse LYPD8 Recombinant monoclonal antibody, PBS Only

Catalog Number: 87446-1-PBS



## Basic Information

<b>Catalog Number:</b> 87446-1-PBS	<b>GenBank Accession Number:</b> NM_001083884.1	<b>Purification Method:</b> Protein A purification
<b>Source:</b> Rabbit	<b>GeneID (NCBI):</b> 70163	<b>CloneNo.:</b> 252926G3
<b>Isotype:</b> IgG	<b>UNIPROT ID:</b> Q9D750	
<b>Immunogen Catalog Number:</b> EG7518	<b>Full Name:</b> RIKEN cDNA 2210415F13 gene	
	<b>Calculated MW:</b> 28 kDa	
	<b>Observed MW:</b> 75 kDa, 45 kDa	

## Applications

**Tested Applications:**  
WB, Indirect ELISA

**Species Specificity:**  
mouse

## Background Information

Ly6/PLAUR domain-containing protein 8 (LYPD8) is a highly glycosylated glycosylphosphatidylinositol-anchored protein, which is anchored to intestinal epithelial cells in the uppermost epithelial layer, is constitutively shed into the intestinal lumen and preferentially binds to flagellated bacteria from various genera (PMID: 27027293; 29259722). It has been reported that Lypd8 mediates the segregation of intestinal bacteria and epithelial cells in the colon, thereby preserving intestinal homeostasis (PMID: 27027293). The higher observed molecular weight of LYPD8 is 75 kDa, due to glycosylation modification (PMID: 29259722).

## Storage

**Storage:**  
Store at -80°C.  
**The product is shipped with ice packs. Upon receipt, store it immediately at -80°C**

**Storage Buffer:**  
PBS only, pH7.3

For technical support and original validation data for this product please contact:

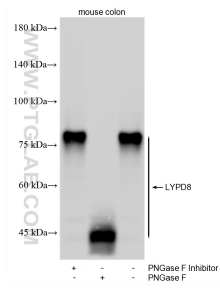
T: 4006900926

E: Proteintech-CN@ptglab.com

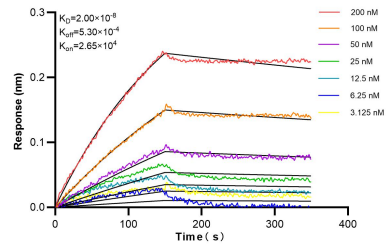
W: ptgcn.com

**This product is exclusively available under Proteintech Group brand and is not available to purchase from any other manufacturer.**

## Selected Validation Data



Various lysates were subjected to SDS PAGE followed by western blot with 87446-1-RR (LYPD8 antibody) at dilution of 1:10000 incubated at room temperature for 1.5 hours. This data was developed using the same antibody clone with 87446-1-PBS in a different storage buffer formulation.



Biolayer interferometry (BLI) kinetic assays of 87446-1-RR against Mouse LYPD8 were performed. The affinity constant is 20.0 nM.