

For Research Use Only

CCL18 Recombinant monoclonal antibody, PBS Only (Capture)

Catalog Number: 87440-4-PBS



Basic Information

Catalog Number:

87440-4-PBS

Source:

Rabbit

Isotype:

IgG

Immunogen Catalog Number:

EG5093

GenBank Accession Number:

BC069700

GeneID (NCBI):

6362

UNIPROT ID:

P55774

Full Name:

chemokine (C-C motif) ligand 18
(pulmonary and activation-regulated)

Calculated MW:

89 aa, 10 kDa

Purification Method:

Protein A purification

CloneNo.:

251591H7

Applications

Tested Applications:

Sandwich ELISA, Indirect ELISA

Species Specificity:

human

Background Information

Storage

Storage:

Store at -80°C.

The product is shipped with ice packs. Upon receipt, store it immediately at -80°C

Storage Buffer:

PBS only, pH7.3

For technical support and original validation data for this product please contact:

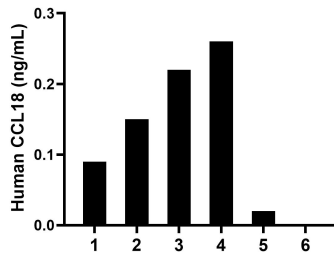
T: 4006900926

E: Proteintech-CN@ptglab.com

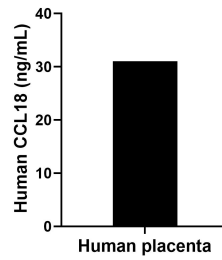
W: ptgcn.com

This product is exclusively available under Proteintech Group brand and is not available to purchase from any other manufacturer.

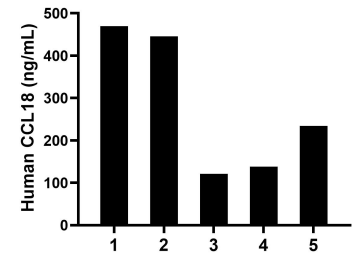
Selected Validation Data



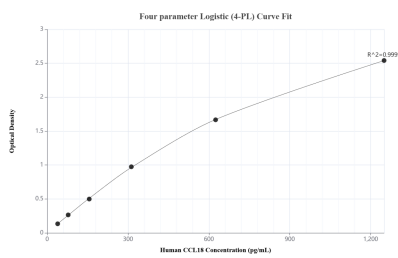
Urine of six individual healthy human donors was measured. The CCL18 concentration of detected samples was determined to be 0.2 ng/mL with a range of ND-0.3 ng/mL.



The mean CCL18 concentration was determined to be 31.0 ng/mL in human placenta extract based on a 3.8 mg/mL extract load.



Plasma of five individual healthy human donors was measured. The CCL18 concentration of detected samples was determined to be 281.8 ng/mL with a range of 121.1-469.5 ng/mL.



Sandwich ELISA standard curve of MP03008-2, Human CCL18 Recombinant Matched Antibody Pair - PBS only. 87440-4-PBS was coated to a plate as the capture antibody and incubated with serial dilutions of standard Eg5093. 87440-3-PBS was HRP conjugated as the detection antibody. Range: 39.1-1250 pg/mL.