

For Research Use Only

SRp20 Recombinant monoclonal antibody, PBS Only (Detector)

Catalog Number: 87438-4-PBS



Basic Information

Catalog Number:

87438-4-PBS

Source:

Rabbit

Isotype:

IgG

Immunogen Catalog Number:

AG1341

GenBank Accession Number:

BC000914

GeneID (NCBI):

6428

UNIPROT ID:

P84103

Full Name:

splicing factor, arginine/serine-rich 3

Calculated MW:

20 kDa

Purification Method:

Protein A purification

CloneNo.:

252792B8

Applications

Tested Applications:

Sandwich ELISA, Indirect ELISA

Species Specificity:

human

Background Information

Storage

Storage:

Store at -80°C.

The product is shipped with ice packs. Upon receipt, store it immediately at -80°C

Storage Buffer:

PBS only, pH7.3

For technical support and original validation data for this product please contact:

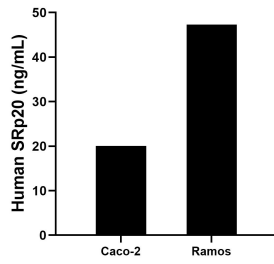
T: 4006900926

E: Proteintech-CN@ptglab.com

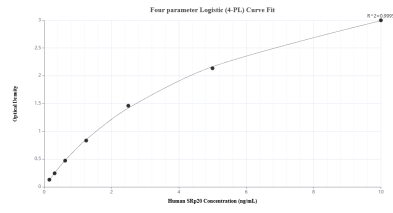
W: ptgcn.com

This product is exclusively available under Proteintech Group brand and is not available to purchase from any other manufacturer.

Selected Validation Data



The mean SRp20 concentration was determined to be 20.09 ng/mL in Caco-2 cell extract based on a 1.2 mg/mL extract load and 47.32 ng/mL in Ramos cell extract based on a 1.2 mg/mL extract load.



Sandwich ELISA standard curve of MP03029-2, Human SRp20 Recombinant Matched Antibody Pair - PBS only. 87438-3-PBS was coated to a plate as the capture antibody and incubated with serial dilutions of standard Ag1341. 87438-4-PBS was HRP conjugated as the detection antibody. Range: 0.156-10 ng/mL