

For Research Use Only

# SRp20 Recombinant monoclonal antibody, PBS Only (Capture)

Catalog Number: 87438-3-PBS



## Basic Information

<b>Catalog Number:</b> 87438-3-PBS	<b>GenBank Accession Number:</b> BC000914	<b>Purification Method:</b> Protein A purification
<b>Source:</b> Rabbit	<b>GeneID (NCBI):</b> 6428	<b>CloneNo.:</b> 252792A1
<b>Isotype:</b> IgG	<b>UNIPROT ID:</b> P84103	
<b>Immunogen Catalog Number:</b> AG1341	<b>Full Name:</b> splicing factor, arginine/serine-rich 3	
	<b>Calculated MW:</b> 20 kDa	

## Applications

**Tested Applications:**  
Cytometric bead array, Sandwich ELISA, Indirect ELISA

**Species Specificity:**  
human

## Background Information

### Storage

**Storage:**  
Store at -80°C.  
**The product is shipped with ice packs. Upon receipt, store it immediately at -80°C**

**Storage Buffer:**  
PBS only, pH7.3

For technical support and original validation data for this product please contact:

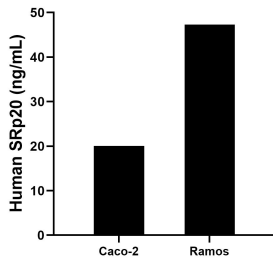
T: 4006900926

E: [Proteintech-CN@ptglab.com](mailto:Proteintech-CN@ptglab.com)

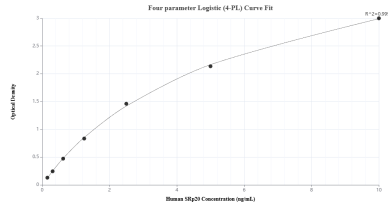
W: [ptgcn.com](http://ptgcn.com)

**This product is exclusively available under Proteintech Group brand and is not available to purchase from any other manufacturer.**

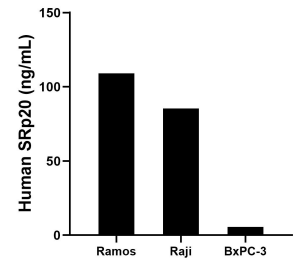
## Selected Validation Data



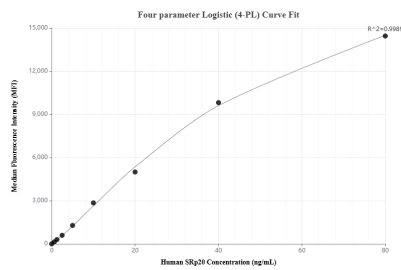
The mean SRp20 concentration was determined to be 20.09 ng/mL in Caco-2 cell extract based on a 1.2 mg/mL extract load and 47.32 ng/mL in Ramos cell extract based on a 1.2 mg/mL extract load.



Sandwich ELISA standard curve of MP03029-2, Human SRp20 Recombinant Matched Antibody Pair - PBS only. 87438-3-PBS was coated to a plate as the capture antibody and incubated with serial dilutions of standard Ag1341. 87438-4-PBS was HRP conjugated as the detection antibody. Range: 0.156-10 ng/mL



The mean SRp20 concentration was determined to be 109.1 ng/mL in Ramos cell extract based on a 1.2 mg/mL extract load, 85.5 ng/mL in Raji cell extract based on a 1.2 mg/mL extract load, 5.6 ng/mL in BxPC-3 cell extract based on a 1.2 mg/mL extract load.



Cytometric bead array standard curve of MP03029-1, SRp20 Recombinant Matched Antibody Pair, PBS Only. Capture antibody: 87438-3-PBS. Detection antibody: 87438-2-PBS. Standard: Ag1341. Range: 0.625-80 ng/mL