

For Research Use Only

SRp20 Recombinant monoclonal antibody, PBS Only (Detector)

Catalog Number: 87438-2-PBS



Basic Information

Catalog Number: 87438-2-PBS	GenBank Accession Number: BC000914	Purification Method: Protein A purification
Source: Rabbit	GeneID (NCBI): 6428	CloneNo.: 252792E8
Isotype: IgG	UNIPROT ID: P84103	
Immunogen Catalog Number: AG1341	Full Name: splicing factor, arginine/serine-rich 3	
	Calculated MW: 20 kDa	

Applications

Tested Applications:
Cytometric bead array, Indirect ELISA

Species Specificity:
human

Background Information

Storage

Storage:
Store at -80°C.
The product is shipped with ice packs. Upon receipt, store it immediately at -80°C

Storage Buffer:
PBS only, pH7.3

For technical support and original validation data for this product please contact:

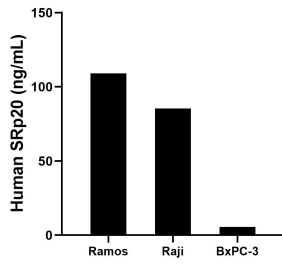
T: 4006900926

E: Proteintech-CN@ptglab.com

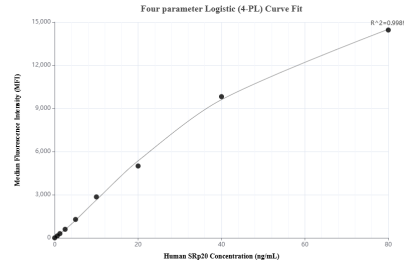
W: ptgcn.com

This product is exclusively available under Proteintech Group brand and is not available to purchase from any other manufacturer.

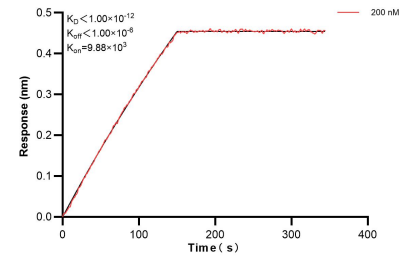
Selected Validation Data



The mean SRp20 concentration was determined to be 109.1 ng/mL in Ramos cell extract based on a 1.2 mg/mL extract load, 85.5 ng/mL in Raji cell extract based on a 1.2 mg/mL extract load, 5.6 ng/mL in BxPC-3 cell extract based on a 1.2 mg/mL extract load.



Cytometric bead array standard curve of MP03029-1, SRp20 Recombinant Matched Antibody Pair, PBS Only. Capture antibody: 87438-3-PBS. Detection antibody: 87438-2-PBS. Standard: Ag1341. Range: 0.625-80 ng/mL.



Bi-layer interferometry (BLI) kinetic assay of 87438-2-PBS against Human SRp20 was performed. The affinity constant is below 1 pM.