

For Research Use Only

# SRp20 Recombinant monoclonal antibody, PBS Only

Catalog Number: 87438-1-PBS



## Basic Information

<b>Catalog Number:</b> 87438-1-PBS	<b>GenBank Accession Number:</b> BC000914	<b>Purification Method:</b> Protein A purification
<b>Source:</b> Rabbit	<b>GeneID (NCBI):</b> 6428	<b>CloneNo.:</b> 252792A4
<b>Isotype:</b> IgG	<b>UNIPROT ID:</b> P84103	
<b>Immunogen Catalog Number:</b> AG1341	<b>Full Name:</b> splicing factor, arginine/serine-rich 3	
	<b>Calculated MW:</b> 20 kDa	
	<b>Observed MW:</b> 20-24 kDa	

## Applications

**Tested Applications:**  
WB, Indirect ELISA

**Species Specificity:**  
human, mouse, rat

## Background Information

SFRS3, also named as SRSF3 and SRP20, belongs to the splicing factor SR family. It may be involved in RNA processing in relation with cellular proliferation and/or maturation. SFRS3 is one of the cognate factors. It is a proto-oncogene critical for cell proliferation and tumor induction and maintenance.

## Storage

**Storage:**  
Store at -80°C.  
**The product is shipped with ice packs. Upon receipt, store it immediately at -80°C**

**Storage Buffer:**  
PBS only, pH7.3

For technical support and original validation data for this product please contact:

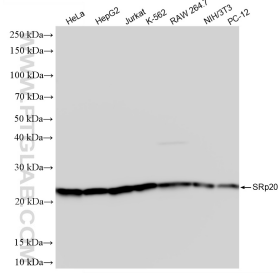
T: 4006900926

E: [Proteintech-CN@ptglab.com](mailto:Proteintech-CN@ptglab.com)

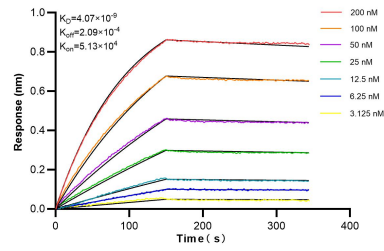
W: [ptgcn.com](http://ptgcn.com)

**This product is exclusively available under Proteintech Group brand and is not available to purchase from any other manufacturer.**

## Selected Validation Data



Various lysates were subjected to SDS PAGE followed by western blot with 87438-1-RR (SRp20 antibody) at dilution of 1:10000 incubated at room temperature for 1.5 hours. This data was developed using the same antibody clone with 87438-1-PBS in a different storage buffer formulation.



Biolayer interferometry (BLI) kinetic assays of 87438-1-RR against Human SRp20 were performed. The affinity constant is 4.07 nM.