

For Research Use Only

OPRD1 Recombinant monoclonal antibody

Catalog Number: 87435-1-RR



Basic Information

Catalog Number:

87435-1-RR

Source:

Rabbit

Isotype:

IgG

GenBank Accession Number:

NM_000911

GeneID (NCBI):

4985

UNIPROT ID:

P41143

Full Name:

opioid receptor, delta 1

Observed MW:

45 kDa

Purification Method:

Protein A purification

CloneNo.:

252703H3

Recommended Dilutions:

WB: 1:2000-1:10000

Applications

Tested Applications:

WB, ELISA

Species Specificity:

human, mouse

Positive Controls:

WB: HUVEC cells, U-87 MG cells, Neuro-2a cells

Background Information

Opioid receptor delta 1 (OPRD1), also known as the δ -opioid receptor (DOR), is a class A G protein-coupled receptor (GPCR) that mediates the biological effects of endogenous opioid peptides such as enkephalins. OPRD1 primarily couples to Gi/Go proteins, leading to inhibition of adenylyl cyclase, reduced intracellular cAMP production, modulation of ion channel activity, and suppression of neurotransmitter release. It is widely expressed in the central and peripheral nervous systems, including the cortex, striatum, hippocampus, spinal cord, and sensory neurons, where it regulates analgesia, mood, reward, emotional processing, and neuroprotection. Compared with other opioid receptors, OPRD1 has attracted particular interest as a target for pain management with potentially reduced respiratory depression and abuse liability, although its pharmacology is complex and context dependent. Dysregulated OPRD1 signaling has been implicated in chronic pain, depression, anxiety, addiction, epilepsy, and neuroinflammatory disorders.

Storage

Storage:

Store at -20°C. Stable for one year after shipment.

Storage Buffer:

PBS with 0.02% sodium azide and 50% glycerol, pH7.3

Aliquoting is unnecessary for -20°C storage

For technical support and original validation data for this product please contact:

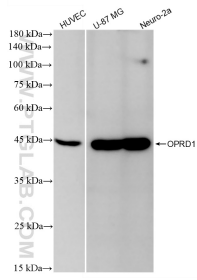
T: 4006900926

E: Proteintech-CN@ptglab.com

W: ptgcn.com

This product is exclusively available under Proteintech Group brand and is not available to purchase from any other manufacturer.

Selected Validation Data



Various lysates were subjected to SDS PAGE followed by western blot with 87435-1-RR (OPRD1 antibody) at dilution of 1:5000 incubated at room temperature for 1.5 hours.