

For Research Use Only

CD239/BCAM Recombinant monoclonal antibody

Catalog Number: 87430-1-RR



Basic Information

| | | |
|--|---|---|
| Catalog Number: 87430-1-RR | GenBank Accession Number: NM_020486.2 | Purification Method: Protein A purification |
| Source: Rabbit | GeneID (NCBI): 57278 | CloneNo.: 251702A10 |
| Isotype: IgG | UNIPROT ID: Q9R069 | Recommended Dilutions: WB: 1:5000-1:50000 |
| Immunogen Catalog Number: EG6306 | Full Name: basal cell adhesion molecule | |
| | Calculated MW: 68 kDa | |
| | Observed MW: 67 kDa, 78-85 kDa | |

Applications

| | |
|---|---|
| Tested Applications: WB, ELISA | Positive Controls: WB : mouse lung tissue, rat lung tissue, mouse kidney tissue |
| Species Specificity: mouse, rat | |

Background Information

Basal cell adhesion molecule (Lu/BCAM) is a membrane-bound glycoprotein of the immunoglobulin superfamily (IgSF), functioning as a receptor for the extracellular matrix protein, laminin. BCAM (Lutheran/basal cell-adhesion molecule, a glycoprotein) belongs to the immunoglobulin superfamily which contains both Lu blood group and BCAM tumor-associated antigens. Proteomics analysis suggests that BCAM might be a potential biomarker for pancreatic cancer (PMID: 19199705). BCAM, involved in cell adhesion and migration, can also promote tumor metastasis and has been elucidated to play a functional role in the metastasis of thyroid cancer and gastric cancer (PMID: 10728810, 35941663). De-glycosylated BCAM has a predicted molecular weight of 67 kDa. Two BCAM glycoprotein (gp) isoforms are present on human RBCs, Lu (85 kDa) and Lu(v13) (78 kDa); they result from the alternative splicing of intron 13 and differ by the lengths of their cytoplasmic domains (PMID: 23160466).

Storage

Storage:
Store at -20°C. Stable for one year after shipment.
Storage Buffer:
PBS with 0.02% sodium azide and 50% glycerol, pH7.3
Aliquoting is unnecessary for -20°C storage

For technical support and original validation data for this product please contact:

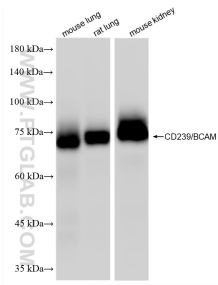
T: 4006900926

E: Proteintech-CN@ptglab.com

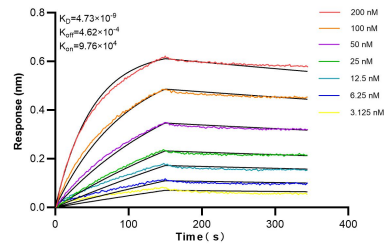
W: ptgcn.com

This product is exclusively available under Proteintech Group brand and is not available to purchase from any other manufacturer.

Selected Validation Data



Various lysates were subjected to SDS PAGE followed by western blot with 87430-1-RR (CD239/BCAM antibody) at dilution of 1:10000 incubated at room temperature for 1.5 hours.



Biolayer interferometry (BLI) kinetic assays of 87430-1-RR against Mouse CD239/BCAM were performed. The affinity constant is 4.73 nM.