

For Research Use Only

ACSL1 Recombinant monoclonal antibody

Catalog Number: 87427-1-RR



Basic Information

Catalog Number: 87427-1-RR	GenBank Accession Number: BC050073	Purification Method: Protein A purification
Source: Rabbit	GeneID (NCBI): 2180	CloneNo.: 251988E7
Isotype: IgG	UNIPROT ID: P33121	Recommended Dilutions: WB: 1:5000-1:50000
Immunogen Catalog Number: AG5059	Full Name: acyl-CoA synthetase long-chain family member 1	
	Calculated MW: 78 kDa	
	Observed MW: 70-75 kDa	

Applications

Tested Applications: WB, ELISA	Positive Controls: WB : mouse liver tissue, rat liver tissue
Species Specificity: human, mouse, rat	

Background Information

ACSL1(Long-chain-fatty-acid--CoA ligase 1) is also named as FACL1, FACL2, LACS, LACS1, LACS2 and belongs to the ATP-dependent AMP-binding enzyme family. ACSL1 is a 75 kDa protein that is associated peripherally with the plasma membrane(Brian M Wiczer, etc., 2006). ACSL1 is abundantly expressed in tissues, such as liver and brown fat, that metabolize substantial amounts of triglycerides as fuel, and as such, a deficiency in ACSL1 function could have a more profound affect in those cells, resulting in hepatosteatosis and potentially increased very low density lipoprotein production by the liver or decreased thermogenic capacity in brown adipose tissue(PMID:19429676). An anti-rat ACSL1 antibody recognized a band of the predicted 68 kDa in high-speed supernatant from rat liver and in human and murine SMCs, monocyte-derived macrophages, and murine peritoneal macrophages (PMID:17259370). It has 2 isoforms produced by alternative splicing.

Storage

Storage:
Store at -20°C. Stable for one year after shipment.
Storage Buffer:
PBS with 0.02% sodium azide and 50% glycerol, pH7.3
Aliquoting is unnecessary for -20°C storage

For technical support and original validation data for this product please contact:

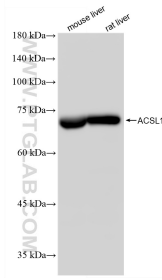
T: 4006900926

E: Proteintech-CN@ptglab.com

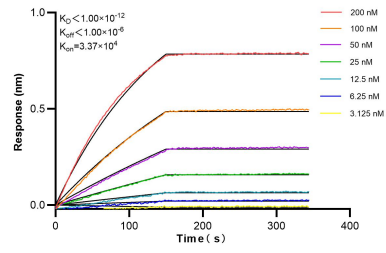
W: ptgcn.com

This product is exclusively available under Proteintech Group brand and is not available to purchase from any other manufacturer.

Selected Validation Data



Various lysates were subjected to SDS PAGE followed by western blot with 87427-1-RR (ACSL1 antibody) at dilution of 1:10000 incubated at room temperature for 1.5 hours.



Biolayer interferometry (BLI) kinetic assays of 87427-1-RR against Human ACSL1 were performed. The affinity constant is below 1 pM.