

For Research Use Only

ACSL1 Recombinant monoclonal antibody, PBS Only

Catalog Number: 87427-1-PBS



Basic Information

Catalog Number:

87427-1-PBS

Source:

Rabbit

Isotype:

IgG

Immunogen Catalog Number:

AG5059

GenBank Accession Number:

BC050073

GeneID (NCBI):

2180

UNIPROT ID:

P33121

Full Name:

acyl-CoA synthetase long-chain family member 1

Calculated MW:

78 kDa

Observed MW:

70-75 kDa

Purification Method:

Protein A purification

CloneNo.:

251988E7

Applications

Tested Applications:

WB, Indirect ELISA

Species Specificity:

human, mouse, rat

Background Information

ACSL1(Long-chain-fatty-acid--CoA ligase 1) is also named as FACL1, FACL2, LACS, LACS1, LACS2 and belongs to the ATP-dependent AMP-binding enzyme family. ACSL1 is a 75 kDa protein that is associated peripherally with the plasma membrane(Brian M Wiczer, etc., 2006). ACSL1 is abundantly expressed in tissues, such as liver and brown fat, that metabolize substantial amounts of triglycerides as fuel, and as such, a deficiency in ACSL1 function could have a more profound affect in those cells, resulting in hepatosteatosis and potentially increased very low density lipoprotein production by the liver or decreased thermogenic capacity in brown adipose tissue(PMID:19429676). An anti-rat ACSL1 antibody recognized a band of the predicted 68 kDa in high-speed supernatant from rat liver and in human and murine SMCs, monocyte-derived macrophages, and murine peritoneal macrophages (PMID:17259370). It has 2 isoforms produced by alternative splicing.

Storage

Storage:

Store at -80°C.

The product is shipped with ice packs. Upon receipt, store it immediately at -80°C

Storage Buffer:

PBS only, pH7.3

For technical support and original validation data for this product please contact:

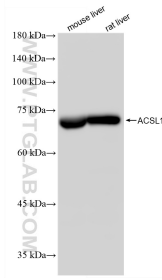
T: 4006900926

E: Proteintech-CN@ptglab.com

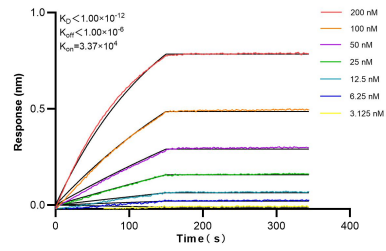
W: ptgcn.com

This product is exclusively available under Proteintech Group brand and is not available to purchase from any other manufacturer.

Selected Validation Data



Various lysates were subjected to SDS PAGE followed by western blot with 87427-1-RR (ACSL1 antibody) at dilution of 1:10000 incubated at room temperature for 1.5 hours. This data was developed using the same antibody clone with 87427-1-PBS in a different storage buffer formulation.



Biolayer interferometry (BLI) kinetic assays of 87427-1-RR against Human ACSL1 were performed. The affinity constant is below 1 pM.