

For Research Use Only

# MRPL19 Recombinant monoclonal antibody

Catalog Number: 87422-1-RR



## Basic Information

Catalog Number:

87422-1-RR

Source:

Rabbit

Isotype:

IgG

Immunogen Catalog Number:

AG9738

GenBank Accession Number:

BC030144

GeneID (NCBI):

9801

UNIPROT ID:

P49406

Full Name:

mitochondrial ribosomal protein L19

Calculated MW:

292 aa, 34 kDa

Observed MW:

30-35 kDa

Purification Method:

Protein A purification

CloneNo.:

252836E9

Recommended Dilutions:

WB: 1:5000-1:50000

## Applications

Tested Applications:

WB, ELISA

Species Specificity:

human

Positive Controls:

WB : HeLa cells, HepG2 cells, ACHN cells, A549 cells, SK-N-SH cells

## Background Information

### Storage

Storage:

Store at -20°C. Stable for one year after shipment.

Storage Buffer:

PBS with 0.02% sodium azide and 50% glycerol, pH7.3

Aliquoting is unnecessary for -20°C storage

For technical support and original validation data for this product please contact:

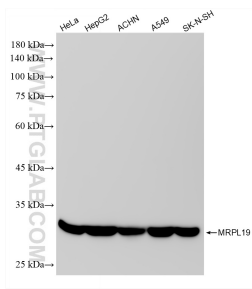
T: 4006900926

E: [Proteintech-CN@ptglab.com](mailto:Proteintech-CN@ptglab.com)

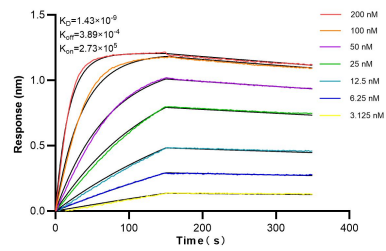
W: [ptgcn.com](http://ptgcn.com)

This product is exclusively available under Proteintech Group brand and is not available to purchase from any other manufacturer.

## Selected Validation Data



Various lysates were subjected to SDS PAGE followed by western blot with 87422-1-RR (MRPL19 antibody) at dilution of 1:10000 incubated at room temperature for 1.5 hours.



Biolayer interferometry (BLI) kinetic assays of 87422-1-RR against Human MRPL19 were performed. The affinity constant is 1.43 nM.