

For Research Use Only

ATF1 Recombinant monoclonal antibody, PBS Only (Capture)

Catalog Number: 87421-3-PBS



Basic Information

Catalog Number: 87421-3-PBS	GenBank Accession Number: BC029619	Purification Method: Protein A purification
Source: Rabbit	GeneID (NCBI): 466	CloneNo.: 252816C10
Isotype: IgG	UNIPROT ID: P18846	
Immunogen Catalog Number: AG2548	Full Name: activating transcription factor 1	
	Calculated MW: 271 aa, 29 kDa	

Applications

Tested Applications:
Cytometric bead array, Sandwich ELISA, Indirect ELISA

Species Specificity:
human

Background Information

Storage

Storage:
Store at -80°C.
The product is shipped with ice packs. Upon receipt, store it immediately at -80°C

Storage Buffer:
PBS only, pH7.3

For technical support and original validation data for this product please contact:

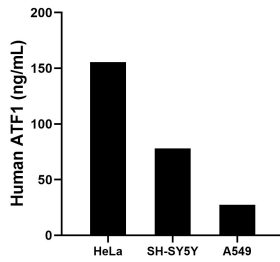
T: 4006900926

E: Proteintech-CN@ptglab.com

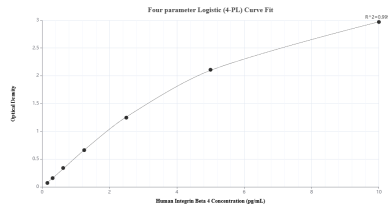
W: ptgcn.com

This product is exclusively available under Proteintech Group brand and is not available to purchase from any other manufacturer.

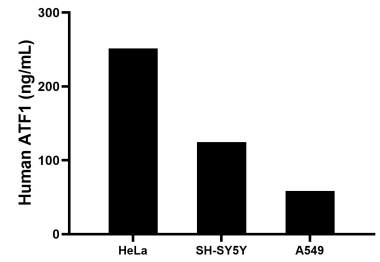
Selected Validation Data



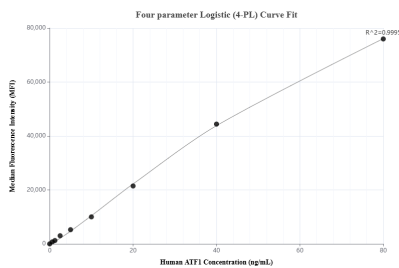
The mean ATF1 concentration was determined to be 155.59 ng/mL in HeLa cell extract based on a 1.2 mg/mL extract load, 78.17 ng/mL in SH-SY5Y cell extract based on a 1.2 mg/mL extract load and 27.49 ng/mL in A549 cell extract based on a 1.2 mg/mL extract load.



Sandwich ELISA standard curve of MP03034-2, Human ATF1 Recombinant Matched Antibody Pair - PBS only. 87421-3-PBS was coated to a plate as the capture antibody and incubated with serial dilutions of standard Ag2548. 87421-4-PBS was HRP conjugated as the detection antibody. Range: 0.156-10 ng/mL



The mean ATF1 concentration was determined to be 251.5 ng/mL in HeLa cell extract based on a 1.2 mg/mL extract load, 124.3 ng/mL in SH-SY5Y cell extract based on a 1.2 mg/mL extract load, 58.4 ng/mL in A549 cell extract based on a 1.2 mg/mL extract load.



Cytometric bead array standard curve of MP03034-1, ATF1 Recombinant Matched Antibody Pair, PBS Only. Capture antibody: 87421-3-PBS. Detection antibody: 87421-2-PBS. Standard: Ag2548. Range: 0.625-80 ng/mL