

For Research Use Only

ATF1 Recombinant monoclonal antibody, PBS Only (Detector)

Catalog Number:87421-2-PBS



Basic Information

Catalog Number:

87421-2-PBS

Source:

Rabbit

Isotype:

IgG

Immunogen Catalog Number:

AG2548

GenBank Accession Number:

BC029619

GeneID (NCBI):

466

UNIPROT ID:

P18846

Full Name:

activating transcription factor 1

Calculated MW:

271 aa, 29 kDa

Purification Method:

Protein A purification

CloneNo.:

252816F11

Applications

Tested Applications:

Cytometric bead array, Indirect ELISA

Species Specificity:

human

Background Information

Storage

Storage:

Store at -80°C.

The product is shipped with ice packs. Upon receipt, store it immediately at -80°C

Storage Buffer:

PBS only, pH7.3

For technical support and original validation data for this product please contact:

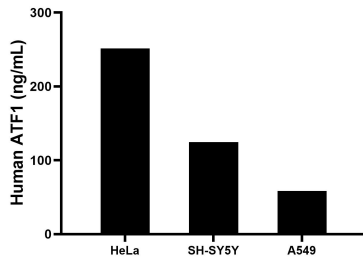
T: 4006900926

E: Proteintech-CN@ptglab.com

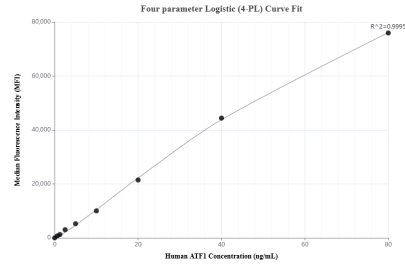
W: ptgcn.com

This product is exclusively available under Proteintech Group brand and is not available to purchase from any other manufacturer.

Selected Validation Data



The mean ATF1 concentration was determined to be 251.5 ng/mL in HeLa cell extract based on a 1.2 mg/mL extract load, 124.3 ng/mL in SH-SY5Y cell extract based on a 1.2 mg/mL extract load, 58.4 ng/mL in A549 cell extract based on a 1.2 mg/mL extract load.



Cytometric bead array standard curve of MP03034-1, ATF1 Recombinant Matched Antibody Pair, PBS Only. Capture antibody: 87421-3-PBS. Detection antibody: 87421-2-PBS. Standard: Ag2548. Range: 0.625-80 ng/mL.