

For Research Use Only

ITB4 Recombinant monoclonal antibody, PBS Only (Detector)

Catalog Number: 87416-3-PBS



Basic Information

Catalog Number:

87416-3-PBS

Source:

Rabbit

Isotype:

IgG

Immunogen Catalog Number:

EG10479

GenBank Accession Number:

GeneID (NCBI):

3691

Full Name:

integrin, beta 4

Purification Method:

Protein A purification

CloneNo.:

252740E2

Applications

Tested Applications:

Cytometric bead array, Sandwich ELISA, Indirect ELISA

Species Specificity:

human

Background Information

Storage

Storage:

Store at -80°C.

The product is shipped with ice packs. Upon receipt, store it immediately at -80°C

Storage Buffer:

PBS only, pH7.3

For technical support and original validation data for this product please contact:

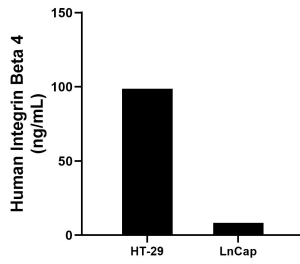
T: 4006900926

E: Proteintech-CN@ptglab.com

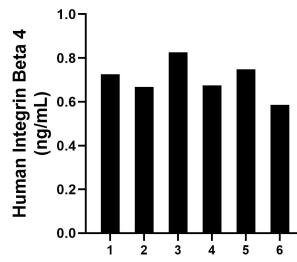
W: ptgcn.com

This product is exclusively available under Proteintech Group brand and is not available to purchase from any other manufacturer.

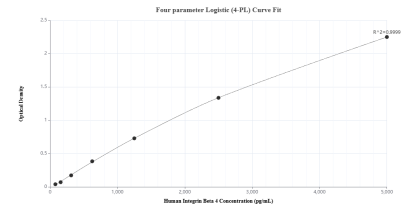
Selected Validation Data



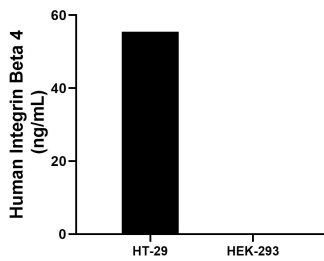
The mean Integrin Beta 4 concentration was determined to be 98.74 ng/mL in HT-29 cell extract based on a 1.1 mg/mL extract load and 8.34 ng/mL in LnCap cell extract based on a 1.2 mg/mL extract load.



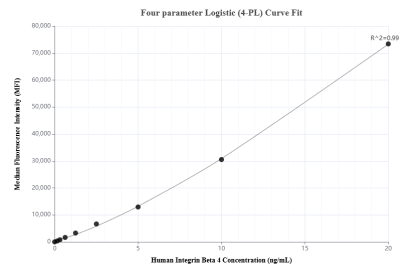
Plasma of six individual healthy human donors was measured. The human Integrin Beta 4 concentration of detected samples was determined to be 0.70 ng/mL with a range of 0.59 - 0.83 ng/mL.



Sandwich ELISA standard curve of MP03021-1, Human Integrin Beta 4 Recombinant Matched Antibody Pair - PBS only. 87416-4-PBS was coated to a plate as the capture antibody and incubated with serial dilutions of standard Eg4880. 87416-3-PBS was HRP conjugated as the detection antibody. Range: 78.1-5000 pg/mL



The mean Integrin Beta 4 concentration was determined to be 55.5 ng/mL in HT-29 cell extract based on a 1.7 mg/mL extract load, HEK-293 cell extract were served as a negative control.



Cytometric bead array standard curve of MP03021-1, Integrin Beta 4 Recombinant Matched Antibody Pair, PBS Only. Capture antibody: 87416-4-PBS. Detection antibody: 87416-3-PBS. Standard: Eg10479. Range: 0.156-20 ng/mL.