

For Research Use Only

Integrin beta 4 Recombinant monoclonal antibody, PBS Only

Catalog Number:87416-2-PBS



Basic Information

Catalog Number: 87416-2-PBS	GenBank Accession Number: 3691	Purification Method: Protein A purification
Source: Rabbit	GeneID (NCBI): 3691	CloneNo.: 252740B3
Isotype: IgG	Full Name: integrin, beta 4	
Immunogen Catalog Number: EG10479	Observed MW: 200 kDa	

Applications

Tested Applications:
WB, Indirect ELISA

Species Specificity:
human, mouse, rat

Background Information

Integrins are cell adhesion receptors that are heterodimers composed of non-covalently associated alpha and beta subunits. Integrin beta-4 is predominantly expressed in squamous epithelial cells, endothelial cells, immature thymocytes, Schwann cells, and fibroblasts of the peripheral nervous system (PMID: 28084395). Integrin beta-4 pairs with alpha-6, and the heterodimeric integrin alpha-6/beta-4 is a receptor for laminin. Integrin alpha-6/beta-4 plays a critical structural role in the hemidesmosome of epithelial cells, and also plays a role in the invasive and metastatic phenotype of various cancers.

Storage

Storage:
Store at -80°C.
The product is shipped with ice packs. Upon receipt, store it immediately at -80°C

Storage Buffer:
PBS only, pH7.3

For technical support and original validation data for this product please contact:

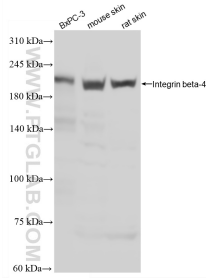
T: 4006900926

E: Proteintech-CN@ptglab.com

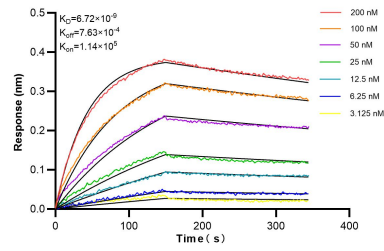
W: ptgcn.com

This product is exclusively available under Proteintech Group brand and is not available to purchase from any other manufacturer.

Selected Validation Data



Various lysates were subjected to SDS PAGE followed by western blot with 87416-2-RR (ITB4 antibody) at dilution of 1:1000 incubated at room temperature for 1.5 hours. This data was developed using the same antibody clone with 87416-2-PBS in a different storage buffer formulation.



Biolayer interferometry (BLI) kinetic assays of 87416-2-RR against Human Integrin beta 4 were performed. The affinity constant is 6.72 nM.