

For Research Use Only

Integrin alpha-8 Recombinant monoclonal antibody

Catalog Number: 87408-1-RR



Basic Information

Catalog Number: 87408-1-RR	GenBank Accession Number: GeneID (NCBI): 241226	Purification Method: Protein A purification
Source: Rabbit	UNIPROT ID: A2ARA8	CloneNo.: 252745D11
Isotype: IgG	Full Name: integrin alpha 8	Recommended Dilutions: WB: 1:5000-1:50000 IF-P: 1:500-1:2000
Immunogen Catalog Number: EG10469	Calculated MW: 117 kDa	
	Observed MW: 140 kDa	

Applications

Tested Applications: WB, IF-P, ELISA	Positive Controls:
Species Specificity: human, mouse, rat	WB : mouse spleen tissue, human kidney tissue, mouse lung tissue, mouse kidney tissue, rat lung tissue, rat spleen tissue, rat kidney tissue
	IF-P : mouse lung tissue,

Background Information

Integrins are cell adhesion receptors that are heterodimers composed of non-covalently associated α and β subunits. Integrin alpha-8 is a single-pass type I membrane protein that forms a heterodimer with integrin beta-1 to serve as a receptor for RGD-containing matrix molecules (fibronectin, vitronectin, tenascin C, osteopontin, and nephronectin) (PMID: 33000355). Integrin alpha-8 beta-1 plays a critical role in epithelial-mesenchymal interactions and functions in the genesis of kidney and probably of other organs (PMID: 9054500; 19769957). The apparent molecular weight of integrin alpha-8 is larger than the calculated molecular weight of 117 kDa, possibly due to glycosylation (PMID: 7768999).

Storage

Storage:
Store at -20°C. Stable for one year after shipment.
Storage Buffer:
PBS with 0.02% sodium azide and 50% glycerol, pH7.3
Aliquoting is unnecessary for -20°C storage

For technical support and original validation data for this product please contact:

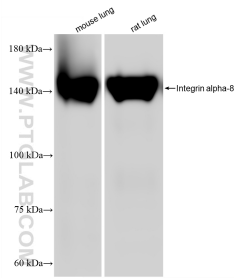
T: 4006900926

E: Proteintech-CN@ptglab.com

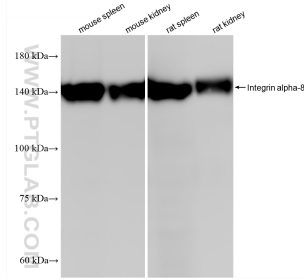
W: ptgcn.com

This product is exclusively available under Proteintech Group brand and is not available to purchase from any other manufacturer.

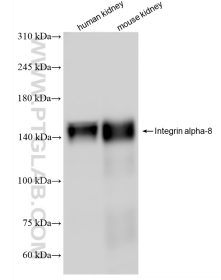
Selected Validation Data



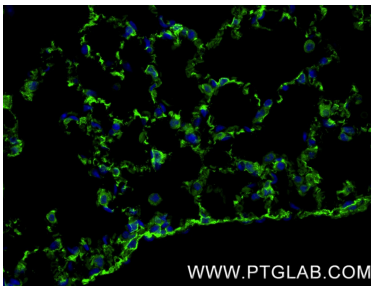
Various lysates were subjected to SDS PAGE followed by western blot with 87408-1-RR (Integrin alpha-8 antibody) at dilution of 1:20000 incubated at room temperature for 1.5 hours.



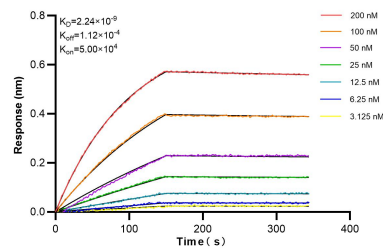
Various lysates were subjected to SDS PAGE followed by western blot with 87408-1-RR (Integrin alpha-8 antibody) at dilution of 1:20000 incubated at room temperature for 1.5 hours.



Various lysates were subjected to SDS PAGE followed by western blot with 87408-1-RR (Integrin alpha-8 antibody) at dilution of 1:10000 incubated at room temperature for 1.5 hours.



Immunofluorescent analysis of (4% PFA) fixed paraffin-embedded mouse lung tissue using Integrin alpha-8 antibody (87408-1-RR, Clone: 252745D11) at dilution of 1:1000 and CoraLite®488-Conjugated Goat Anti-Rabbit IgG(H+L) (SA00013-2). Heat mediated antigen retrieval with Tris-EDTA buffer (pH 9.0).



Biolayer interferometry (BLI) kinetic assays of 87408-1-RR against Mouse Integrin alpha 8 were performed. The affinity constant is 2.24 nM.