

For Research Use Only

# Mouse Integrin alpha-8 Recombinant monoclonal antibody, PBS Only

Catalog Number: 87408-1-PBS



## Basic Information

Catalog Number:

87408-1-PBS

Source:

Rabbit

Isotype:

IgG

Immunogen Catalog Number:

EG10469

GenBank Accession Number:

GeneID (NCBI):

241226

UNIPROT ID:

A2ARA8

Full Name:

integrin alpha 8

Calculated MW:

117 kDa

Observed MW:

140 kDa

Purification Method:

Protein A purification

CloneNo.:

252745D11

## Applications

Tested Applications:

WB, IF-P, Indirect ELISA

Species Specificity:

human, mouse, rat

## Background Information

Integrins are cell adhesion receptors that are heterodimers composed of non-covalently associated  $\alpha$  and  $\beta$  subunits. Integrin alpha-8 is a single-pass type I membrane protein that forms a heterodimer with integrin beta-1 to serve as a receptor for RGD-containing matrix molecules (fibronectin, vitronectin, tenascin C, osteopontin, and nephronectin) (PMID: 33000355). Integrin alpha-8 beta-1 plays a critical role in epithelial-mesenchymal interactions and functions in the genesis of kidney and probably of other organs (PMID: 9054500; 19769957). The apparent molecular weight of integrin alpha-8 is larger than the calculated molecular weight of 117 kDa, possibly due to glycosylation (PMID: 7768999).

## Storage

Storage:

Store at -80°C.

The product is shipped with ice packs. Upon receipt, store it immediately at -80°C

Storage Buffer:

PBS only, pH7.3

For technical support and original validation data for this product please contact:

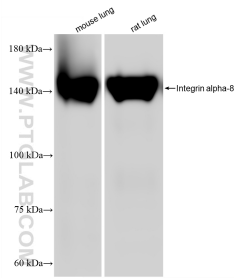
T: 4006900926

E: [Proteintech-CN@ptglab.com](mailto:Proteintech-CN@ptglab.com)

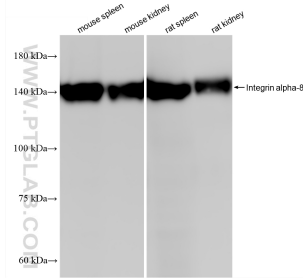
W: [ptgcn.com](http://ptgcn.com)

This product is exclusively available under Proteintech Group brand and is not available to purchase from any other manufacturer.

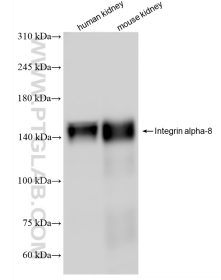
## Selected Validation Data



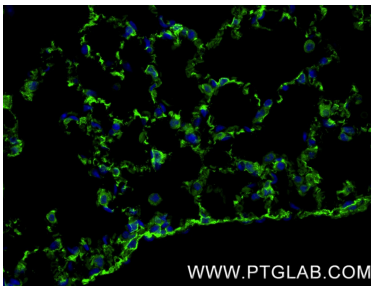
Various lysates were subjected to SDS PAGE followed by western blot with 87408-1-RR (Integrin alpha-8 antibody) at dilution of 1:20000 incubated at room temperature for 1.5 hours. This data was developed using the same antibody clone with 87408-1-PBS in a different storage buffer formulation.



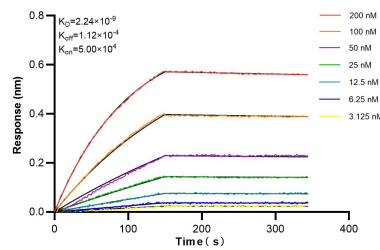
Various lysates were subjected to SDS PAGE followed by western blot with 87408-1-RR (Integrin alpha-8 antibody) at dilution of 1:20000 incubated at room temperature for 1.5 hours. This data was developed using the same antibody clone with 87408-1-PBS in a different storage buffer formulation.



Various lysates were subjected to SDS PAGE followed by western blot with 87408-1-RR (Integrin alpha-8 antibody) at dilution of 1:10000 incubated at room temperature for 1.5 hours. This data was developed using the same antibody clone with 87408-1-PBS in a different storage buffer formulation.



Immunofluorescent analysis of (4% PFA) fixed paraffin-embedded mouse lung tissue were using Integrin alpha-8 antibody (87408-1-RR, Clone: 252745D11) at dilution of 1:1000 and CoraLite®488-Conjugated Goat Anti-Rabbit IgG(H+L) (SA00013-2). Heat mediated antigen retrieval with Tris-EDTA buffer (pH 9.0). This data was developed using the same antibody clone with 87408-1-PBS in a different storage buffer formulation.



Biolayer interferometry (BLI) kinetic assays of 87408-1-RR against Mouse Integrin alpha 8 were performed. The affinity constant is 2.24 nM.